

28680 Series Stainless Steel Head Kit Pump

Features

- Self primes from dry up to 5.0 metres
- Flows up to 520 litres per minute
- Pressure up to 5.0 bar[†]
- Handles hard or soft solids - max. 14mm dia
- Tolerates abrasive wear - replacable wearplate
- Non pulsating flow, proportional to speed
- Handles viscosities up to 10,000 centiPoise
- Minimal shear to thixotropic fluids
- Easy to service and maintain



Typical Applications

- Acids and alkalis, compounds, copper sulphate, methyls, alcohols.
- Industrial chemicals, resins, oils, fatty acids, brine.
- Detergents, soaps, hydrogen peroxide.
- Paints, dyes, inks, varnishes, laquers, solvents.
- Transfer, filling, recirculation and agitation, spillage return, spraying, coating, filtration.
- Viscous, shear-sensitive fluids, small hard and soft solids in suspension.

Specifications

Seal : Carbon / Ceramic mechanical face seal

Seal Elastomers : Nitrile

Pump Head : Stainless steel 316, as-cast interior and exterior finish

End Cover : Stainless steel 316 grade

Shafts : Stainless steel 316 grade, special motor shaft

Bearings : Uses motor bearings

Motor Adaptor : Cast 316 grade Stainless steel

Ports : 3" BSP external thread to BS21 (DIN2999)

Weight : 12.5kg

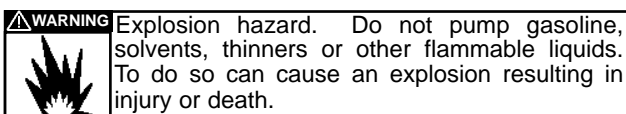
Model Range

Impeller options	Standard Pressure - Max. 2.0 bar		High Pressure - Max. 5.0 bar [†]	
Elastomer option	3A Neoprene		3A Neoprene	
Temperature range	4°C to 70°C		4°C to 70°C	
Mechanical Seal Option				
Carbon/Ceramic			28680-2125	

For models not listed above, consult distributor or factory

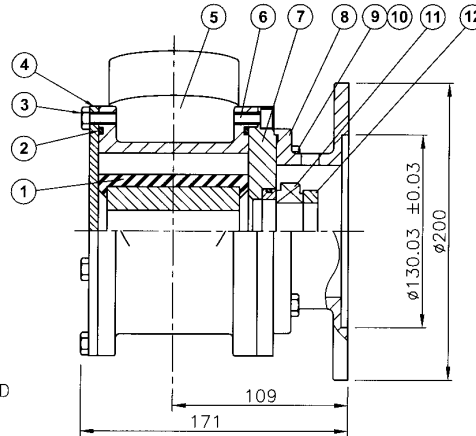
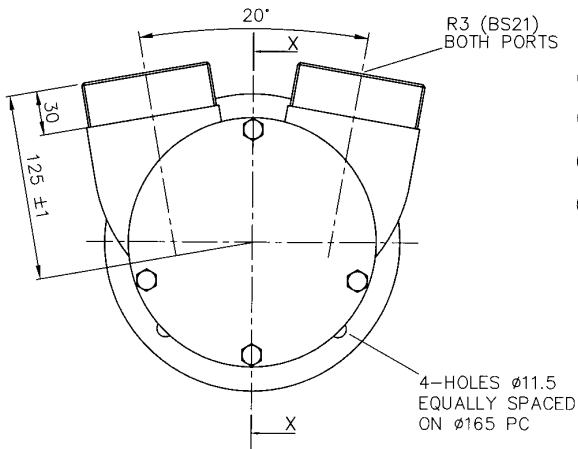
Note : it is not recommended to start the pump at extremes of the temperature range, impeller damage may occur

For Installation, Operating, Maintenance and Safety Instructions refer to form 43001-0543



[†] Pressures over 3.0 bar may reduce motor shaft life

28680 Series



Dimensions in mm

For performance data refer to the 500 size flexible impeller pump performance curves

Parts List

Key	Description	Qty	Part Number
1	Impeller* (Std Pressure) (High Pressure)	1	8500-0005 21899-0005B
2	O'Ring *	2	X2000-1213
3	Screw (Endcover)	4	X3001-209F
4	Endcover	1	23975-0000
5	Body	1	23974-2000
6	Screw (Wearplate)	4	X3007-209F
7	Wearplate	1	28635-0000
8	Motor Adaptor	1	22254-0020
9	Screw (Motor Adaptor)	4	X3001-209F
10	Washer (Motor Adaptor)	4	X3080-101F
11	Seal Assembly *	1	22644-6000
12	Seal Spacer	1	28638-0000

Parts marked * Contained in service kit

Spare Parts & Service Kits

Service Kit for Neoprene High pressure impeller only :
SK315-0225

Models with Neoprene impellers use Nitrile elastomers on seals and O-rings.

Other Available Options

Pedestal pumps, for coupling to motor, gearbox or pulley.

Jabsco



ITT Industries

USA

Jabsco
20 Icon
Foothill Ranch
CA 92610

Tel : +1 949 859 4945
Fax : +1 949 859 1153

UK

Jabsco
Bingley Road
Hoddesdon
Hertfordshire, EN11 0BU

Tel : +44 (0) 1992 450 145
Fax : +44 (0) 1992 467 132

GERMANY

Jabsco GmbH
Oststraße 28
22844 Norderstedt

Tel : +49 (0) 40 53 53 73 0
Fax : +49 (0) 40 53 53 73 11