

# QF5050S

## Quaternary Diaphragm Pumps

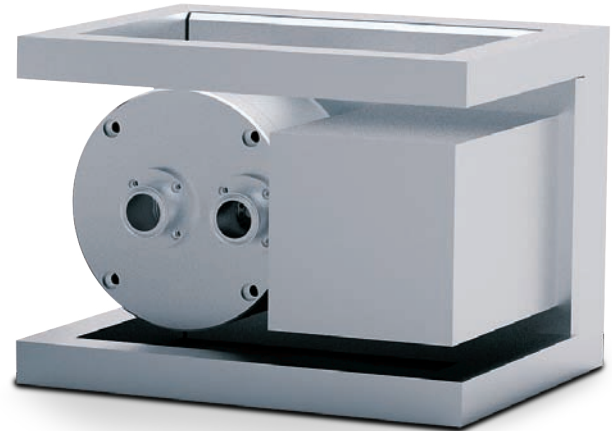
### Multiple-Use – Biotech/Biopharma

#### Features

- 4-piston-technology
- Multi-option installation flexibility
- Complete flow range with one drive
- Gentle product treatment
- Low pulsation
- Wide range of flow with linear turndown
- Compact hygienic design
- Self-priming
- Safe dry-run operation
- Also available as single-use version

#### Applications

- Filtration systems (TFF, etc.)
- Chromatography systems
- Feeding pump
- Virus filtration
- Sterile filtration



#### Technical Data

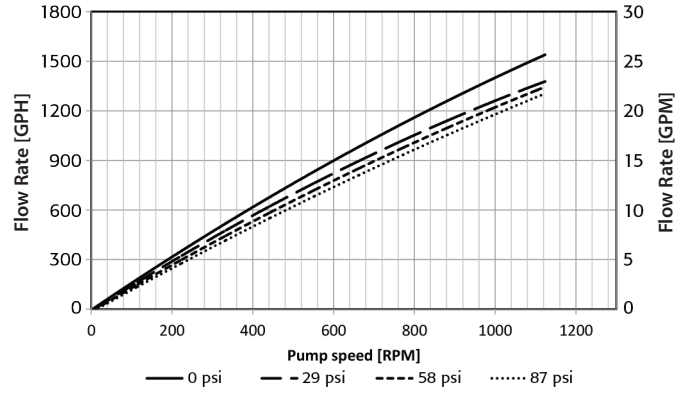
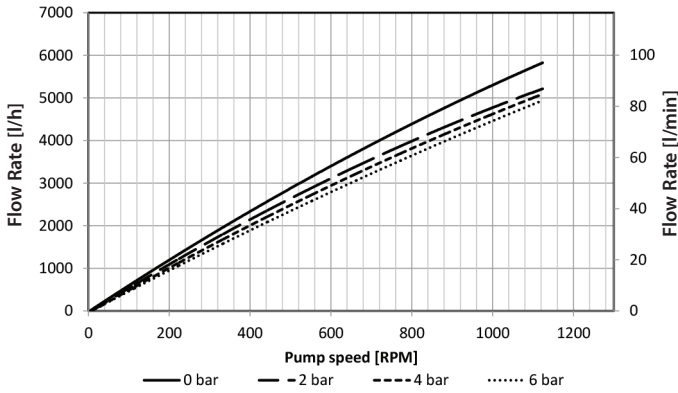
QF5050S Servo Motor	
<b>Flow Rate Maximum:</b>	
Eccentric Shaft 6°	5000 l/h (1321 gph)
<b>Flow Rate Minimum:</b>	
Eccentric Shaft 6°	50 l/h (13 gph)
<b>Pressure:</b>	
Temperature of Fluid < 40° C (104° F)	6 bar (87 psi)
Temperature of Fluid > 40° C (104° F)	4 bar (58 psi)
<b>Maximum Temperature:</b>	
Fluid	80° C (176° F)
CIP	90° C (194° F)
SIP*	130° C (260° F)
Autoclave*	130° C (260° F)
<b>Suction Lift Dry at 1200 rpm:</b>	
Eccentric Shaft 6°	4-4.5 m (13.1-14.7 ft)
<b>Volume Specifications:</b>	
Approximated Volume per Revolution at Free Output	95 ml
Filling Volume Without Connectors	820 ml
<b>Connection Specification (Standard):</b>	
Connectors	1.5" TC
Position of Connectors	Front

QF5050S Servo Motor	
<b>Product Wetted Materials (Standard):</b>	
Pump Housing	SS316L
Valve Plate	SS316L or PP
Diaphragms	TPE
Valves	EPDM
O-rings	EPDM
<b>Certificates/Proofs (Optional):</b>	
Elastomere (product wetted)	USP <88> Cl. VI; FDA21CFR177; BSE/TSE Safe
Stainless Steel Parts (product wetted)	3.1; Surface Roughness; Ferrite Content
<b>Motor (Standard):</b>	
Rated speed	3000 min <sup>-1</sup> (2.662:1 reduction)
Voltage	400 V
Power	3 KW
<b>Pump Dimension with Motor and Housing:</b>	
Length	440 mm (17.32")
Width	325 mm (12.80")
Height	320 mm (12.60")
<b>Pump Weight with Motor and Housing:</b>	
	66 kg (146 lb.)

Other connection specifications, materials and motors available on request.

\*With SS316L valve plate only

## Performance Charts



Depending on the selected motor/frequency drive combination, the motor frequency and the resulting pump speed might differ.

## Accessories

### Control Box



Image may differ from product

- Variable speed controller with integrated touch pad for manual speed control
- Configurable for remote speed control with 4-20 mA analogue input
- 400 V, 3P
- Hygienic 1.4301 housing, IP 54
- Easy plug & play installation

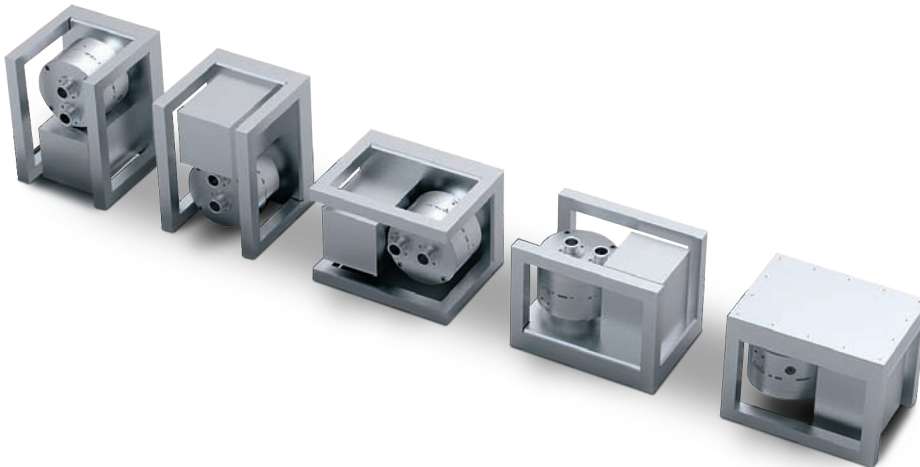


### Power Box

- Plug & Play installation
- Protects system and pump from overpressure
- Configurable pressure switch setpoint
- Reset button for pump reset
- To be used with pressure switch (also available)

### Diaphragm Sensor

- Sensor installed in ring drive unit
- Detection of all liquids
- Signal output to a controller, if diaphragm is ruptured



Distributed by:



© 2014 ALMATEC



ALMATEC Maschinenbau GmbH  
 Carl-Friedrich-Gauß-Str. 5  
 47475 Kamp-Lintfort, Germany  
 O: +49/2842/961-0, F: +49/2842/961-40  
[www.quattroflow.com](http://www.quattroflow.com)  
[info@almatec.de](mailto:info@almatec.de)