

TECHNIQUES DES FLUIDES

10 Rue Jean Poulmarch, bat. 3

Z.I. Du Val d'Argent

95100 Argenteuil

Tel. : 01.34.11.13.73 / Fax : 01.34.11.96.35

E-mail : tdf@techniquesfluides.fr

Site web : www.techniquesfluides.fr



WILDEN MODEL T15 METAL RUBBER-FITTED

Item	Description	Qty.	T15/	T15/	T15/	T15/	T15/	T15/	T15/	T15/	T15/	T15/	T15/
			AAPB/030	AAPB	AAPB/033	AAPB/003	AAAB/030	AAAB/033	AAAB	AAAB/003	AAAD/050	HAPB	HNNN
			P/N	P/N	P/N	P/N	P/N	P/N	P/N	P/N	P/N	P/N	P/N
1	Air Valve Assembly ¹	1	15-2000-07	15-2000-07	15-2000-07	15-2000-07	15-2000-07	15-2000-07	15-2000-07	15-2000-07	15-2000-07	15-2000-07	15-2000-06
2	Air Valve Screen	1	08-2500-07	08-2500-07	08-2500-07	08-2500-07	08-2500-07	08-2500-07	08-2500-07	08-2500-07	08-2500-07	08-2500-07	08-2500-03
3	Air Valve End Cap with Guide (Top)	1	15-2300-23	15-2300-23	15-2300-23	15-2300-23	15-2300-23	15-2300-23	15-2300-23	15-2300-23	15-2300-23	15-2300-23	15-2300-23
4	Air Valve End Cap without Guide (Bottom)	1	15-2330-23	15-2330-23	15-2330-23	15-2330-23	15-2330-23	15-2330-23	15-2330-23	15-2330-23	15-2330-23	15-2330-23	15-2330-23
5	Air Valve Snap Ring	2	15-2650-03	15-2650-03	15-2650-03	15-2650-03	15-2650-03	15-2650-03	15-2650-03	15-2650-03	15-2650-03	15-2650-03	15-2650-03
6	Air Valve Cap O-Ring	2	15-2390-52	15-2390-52	15-2390-52	15-2390-52	15-2390-52	15-2390-52	15-2390-52	15-2390-52	15-2390-52	15-2390-52	15-2390-52
7	Oil Bottle (Optional)	1	15-2850-01	15-2850-01	15-2850-01	15-2850-01	15-2850-01	15-2850-01	15-2850-01	15-2850-01	15-2850-01	15-2850-01	15-2850-01
8	Plug (Optional) 3/8"	1	15-7000-07	15-7000-07	15-7000-07	15-7000-07	15-7000-07	15-7000-07	15-7000-07	15-7000-07	15-7000-07	15-7000-07	15-7000-07
9	Capillary Rod (Optional)	1	15-2900-99	15-2900-99	15-2900-99	15-2900-99	15-2900-99	15-2900-99	15-2900-99	15-2900-99	15-2900-99	15-2900-99	15-2900-99
10	Air Valve Gasket — Buna-N	1	15-2600-52	15-2600-52	15-2600-52	15-2600-52	15-2600-52	15-2600-52	15-2600-52	15-2600-52	15-2600-52	15-2600-52	15-2600-52
11	Air Valve Screw 3/4"-18 x 2 1/4"	4	08-6000-08	08-6000-08	08-6000-08	08-6000-08	08-6000-08	08-6000-08	08-6000-08	08-6000-08	08-6000-08	08-6000-08	08-6000-08
12	Center Block	1	15-3100-01-225	15-3100-01-225	15-3100-01-225	15-3100-01-225	15-3100-01-225	15-3100-01-225	15-3100-01-225	15-3100-01-225	15-3100-01-225	15-3100-01-225	15-3100-01-225
13	Center Block Glyd™ Ring	7	15-3210-55-225	15-3210-55-225	15-3210-55-225	15-3210-55-225	15-3210-55-225	15-3210-55-225	15-3210-55-225	15-3210-55-225	15-3210-55-225	15-3210-55-225	15-3210-55-225
14	Block Gasket — Buna-N	2	15-3520-52	15-3520-52	15-3520-52	15-3520-52	15-3520-52	15-3520-52	15-3520-52	15-3520-52	15-3520-52	15-3520-52	15-3520-52
15	Shaft	1	15-3800-09-07	15-3800-09-07	15-3800-09-07	15-3800-09-07	15-3800-09-07	15-3800-09-07	15-3800-09-07	15-3800-09-07	15-3800-09-07	15-3800-09-07	15-3800-09-07
16	Piston, Outer	2	15-4550-01	15-4550-01	15-4550-01	15-4550-01	15-4550-01	15-4550-01	15-4550-01	15-4550-01	15-4550-01	15-4550-01	15-4550-04
	Piston, Outer, Ultra-Flex™	2	15-4560-01	15-4560-01	15-4560-01	15-4560-01	15-4560-01	15-4560-01	15-4560-01	15-4560-01	15-4560-01	15-4560-01	15-4560-04
17	Piston, Inner	2	15-3700-01	15-3700-01	15-3700-01	15-3700-01	15-3700-01	15-3700-01	15-3700-01	15-3700-01	15-3700-01	15-3700-01	15-3700-03
	Piston, Inner, Ultra-Flex™	2	15-3760-08	15-3760-08	15-3760-08	15-3760-08	15-3760-08	15-3760-08	15-3760-08	15-3760-08	15-3760-08	15-3760-08	15-3760-08
18	Washer, Inner Piston Back-up	2	15-6850-08	15-6850-08	15-6850-08	15-6850-08	15-6850-08	15-6850-08	15-6850-08	15-6850-08	15-6850-08	15-6850-08	15-6850-08
19	Piston Assembly — Bolt ² 3/8"-16 x 1 1/4"	12	15-6130-08	15-6130-08	15-6130-08	15-6130-08	15-6130-08	15-6130-08	15-6130-08	15-6130-08	15-6130-08	15-6130-08	15-6130-08
	Washer, Flat (Not shown)	12	15-6720-08	15-6720-08	15-6720-08	15-6720-08	15-6720-08	15-6720-08	15-6720-08	15-6720-08	15-6720-08	15-6720-08	15-6720-08
20	Air Chamber	2	15-3650-01	15-3650-01	15-3650-01	15-3650-01	15-3650-01	15-3650-01	15-3650-01	15-3650-01	15-3650-01	15-3650-01	15-3650-06
21	Air Chamber Screw 3/8"-16 x 4"	4	15-6200-08	15-6200-08	15-6200-08	15-6200-08	15-6200-08	15-6200-08	15-6200-08	15-6200-08	15-6200-08	15-6200-08	15-6200-03
22	Air Chamber Cone Nut 3/8"-16	4	08-6550-08	08-6550-08	08-6550-08	08-6550-08	08-6550-08	08-6550-08	08-6550-08	08-6550-08	08-6550-08	08-6550-08	08-6550-03
23	Liquid Chamber	2	15-5000-01	15-5000-01	15-5000-01	15-5000-01	15-5000-01	15-5000-01	15-5000-01	15-5000-01	15-5000-01	15-5000-01	15-5000-04
24	Discharge Manifold	1	15-5020-01	15-5020-01	15-5020-01	15-5020-01	15-5020-01	15-5020-01	15-5020-01	15-5020-01	15-5020-01	15-5020-01	15-5020-04
25	Inlet Housing — Screened	1	15-5080-01-30	N/R	15-5080-01-30	N/R	15-5080-01-30	15-5080-01-30	N/R	15-5080-01-30	N/R	15-5080-01-30	N/R
26	Inlet Housing for Footed Base	1	N/R	15-5080-01	N/R	15-5080-01	N/R	15-5080-01	15-5080-01	15-5080-01	15-5080-01	15-5080-01	15-5080-04
27	Screen (for P/N 15-5080-01-30 & 15-5080-01-33)	1	15-5620-01	N/R	15-5620-01	N/R	15-5620-01	15-5620-01	N/R	N/R	15-5620-01	N/R	N/R
28	Suction Hook-up Cover	1	15-5660-01	N/R	15-5660-01	N/R	15-5660-01	15-5660-01	N/R	N/R	15-5660-01	N/R	N/R
29	Hex Head Machine Screw 3/8"-16 x 3/4"	1	08-6140-08	N/R	08-6140-03	N/R	08-6140-08	08-6140-03	N/R	N/R	08-6140-03	N/R	N/R
30	Diaphragm*	2	*	*	*	*	*	*	*	*	*	*	*
31	Valve Ball*	4	*	*	*	*	*	*	*	*	*	*	*
32	Valve Seat*	4	*	*	*	*	*	*	*	*	*	*	*
33	Large Clamp Band Assy.	2	15-7300-08	15-7300-08	15-7300-03	15-7300-03	15-7300-08	15-7300-03	15-7300-08	15-7300-03	15-7300-08	15-7300-03	15-7300-03
34	Large Carriage Bolt 1/2"-13 x 3 1/2"	4	15-6120-08	15-6120-08	15-6120-03	15-6120-03	15-6120-08	15-6120-03	15-6120-08	15-6120-03	15-6120-08	15-6120-03	15-6120-03
35	Large Hex Nut 1/2"-13	4	15-6420-08	15-6420-08	15-6420-03	15-6420-03	15-6420-08	15-6420-03	15-6420-08	15-6420-03	15-6420-08	15-6420-03	15-6420-03
36	Small Clamp Band Assy.	4	15-7100-08	15-7100-08	15-7100-03	15-7100-03	15-7100-08	15-7100-03	15-7100-08	15-7100-03	15-7100-08	15-7100-03	15-7100-03
37	Small Carriage Bolt 3/8"-16 x 2"	8	15-6050-08	15-6050-08	15-6050-03	15-6050-03	15-6050-08	15-6050-03	15-6050-08	15-6050-03	15-6050-08	15-6050-03	15-6050-03
38	Small Hex Nut 3/8"-16	8	08-6450-08	08-6450-08	08-6450-03	08-6450-03	08-6450-08	08-6450-03	08-6450-08	08-6450-03	08-6450-08	08-6450-03	08-6450-03
	Muffler (not shown)	1	15-3510-99	15-3510-99	N/A	N/A	15-3510-99	N/A	15-3510-99	N/A	N/R	15-3510-99	15-3510-99
39	Stallion Ultra-Flex™ Spacer	2	N/R	N/R	N/R	N/R	N/R	N/R	N/R	N/R	15-6900-23-50	N/R	N/R
40	Check Body (not shown)	1	15-3550-01	N/R	15-3550-01	N/R	15-3550-01	15-3550-01	N/R	N/R	15-3550-01	N/R	N/R
	Nipple 1" x Close (not shown)	1	15-7420-08	N/R	15-7420-03	N/R	15-7420-08	15-7420-03	N/R	N/R	15-7420-08	N/R	N/R
	Check Ball (not shown)	1	15-1450-51	N/R	15-1450-51	N/R	15-1450-51	15-1450-51	N/R	N/R	15-1450-51	N/R	N/R
41	Hex Nut 3/8"-16 ⁵	2	08-6450-08	N/R	08-6450-03	N/R	08-6450-08	08-6450-03	N/R	N/R	08-6450-03	N/R	N/R
42	Hex Head Machine Screw 3/8"-16 x 3" ⁶	2	08-6120-08	N/R	08-6120-03	N/R	08-6120-08	08-6120-03	N/R	N/R	08-6120-03	N/R	N/R
	Hex Head Machine Screw 3/8"-16 x 3" ⁶ Stallion	3	08-6120-08	N/R	08-6120-03	N/R	08-6120-08	08-6120-03	N/R	N/R	08-6120-03	N/R	N/R
43	Handle, Collapsible ⁵	2	N/R	N/R	N/R	N/R	N/R	N/R	N/R	N/R	15-7250-08	N/R	N/R
44	Bracket, Handle	4	N/R	N/R	N/R	N/R	N/R	N/R	N/R	N/R	15-7410-08	N/R	N/R
45	Small Hex Nut 3/8"-16	4	N/R	N/R	N/R	N/R	N/R	N/R	N/R	N/R	08-6450-08	N/R	N/R
46	Washer, Flat	4	N/R	N/R	N/R	N/R	N/R	N/R	N/R	N/R	15-6740-08-50	N/R	N/R

*Refer to corresponding elastomer chart in Section 10.

¹Air Valve Assembly includes items 2-7.

²Piston Assembly bolt (P/N 15-6130-08) utilizes a 3/8" washer (15-6720-08).

³T15-070 pump large clamp band comes with 15-6670-03-70 wing nut and 15-6720-03-70 washer.

⁴T15-070 pump small clamp band comes with 08-6770-03-72 wing nut and 08-6720-03-70 washer.

⁵DO NOT hang T15 Stallion pumps by their handles.

⁶Stallion pumps require three (3) each (P/N's 08-6450-03 and 08-6120-03).

NOTE: Stallion pumps come standard with rubber Ultra-Flex™ diaphragms.

-003 Specialty Code = Alloy-Fitted
 -022 Specialty Code = Stainless Steel Clamp Bands
 -030 Specialty Code = Screen Based
 -033 Specialty Code = Screen Based, Alloy-Fitted
 -050 Specialty Code = Stallion
 -070 Specialty Code = Saniflo™

TECHNIQUES DES FLUIDES

10 Rue Jean Poulmarch, bat. 3

Z.I. Du Val d'Argent

95100 Argenteuil

Tel. : 01.34.11.13.73 / Fax : 01.34.11.96.35

E-mail : tdf@techniquesfluides.fr

Site web : www.techniquesfluides.fr



ELASTOMER OPTIONS FOR MODEL T15 METAL PUMPS

Material	Diaphragms (2) P/N	Ultra-Flex™ Diaphragms (2) P/N	Valve Seat* Valve Balls (4) P/N	Valve Seats (4) P/N	O-Rings (4) P/N
Buna-N	15-1010-52	15-1020-52 ³	15-1080-52	15-1120-52	N/A
Neoprene	15-1010-51	15-1020-51 ³	15-1080-51	15-1120-51	N/A
Nordel® (EPDM)	15-1010-54	15-1020-54 ³	15-1080-54	15-1120-54	N/A
Polyurethane	15-1010-50	N/A	15-1080-50	15-1120-50	N/A
Saniflex™	15-1010-56	N/A	15-1080-56	15-1120-56	N/A
Teflon® PTFE	15-1010-55 ¹	N/A	15-1080-55	N/A	15-1200-55
Tetra-Flex™ PTFE	15-1010-64	N/A	N/A	N/A	N/A
Viton®	15-1010-53	15-1020-53 ³	15-1080-53	15-1120-53	N/A
Wil-Flex™	15-1010-58	N/A	15-1080-58	15-1120-58	N/A
Fluoro Seal	N/A	N/A	N/A	N/A	15-1200-54
Aluminum	N/A	N/A	N/A	15-1121-01 ²	N/A
Carbon Steel	N/A	N/A	N/A	15-1121-08 ²	N/A
Hastelloy	N/A	N/A	N/A	15-1121-04 ²	N/A
Stainless Steel	N/A	N/A	N/A	15-1121-03 ²	N/A
Cast Iron	N/A	N/A	N/A	N/A	N/A

¹Teflon® diaphragms utilize a Neoprene back-up diaphragm (P/N 15-1060-51). Please consult your local distributor.

²Metallic valve seats utilize a Teflon® O-ring, P/N 15-1200-55. Fluoro-Seal™ is available upon request.

³Ultra-Flex™ diaphragms require a special inner piston (P/N 15-3760-08) and a spacer (P/N 15-6850-08).

*NOTE: Rubber valve seats do not require an O-ring.

Viton® est une marque déposée de DuPont Performance Elastomers

TECHNIQUES DES FLUIDES

10 Rue Jean Poulmarch, bat. 3

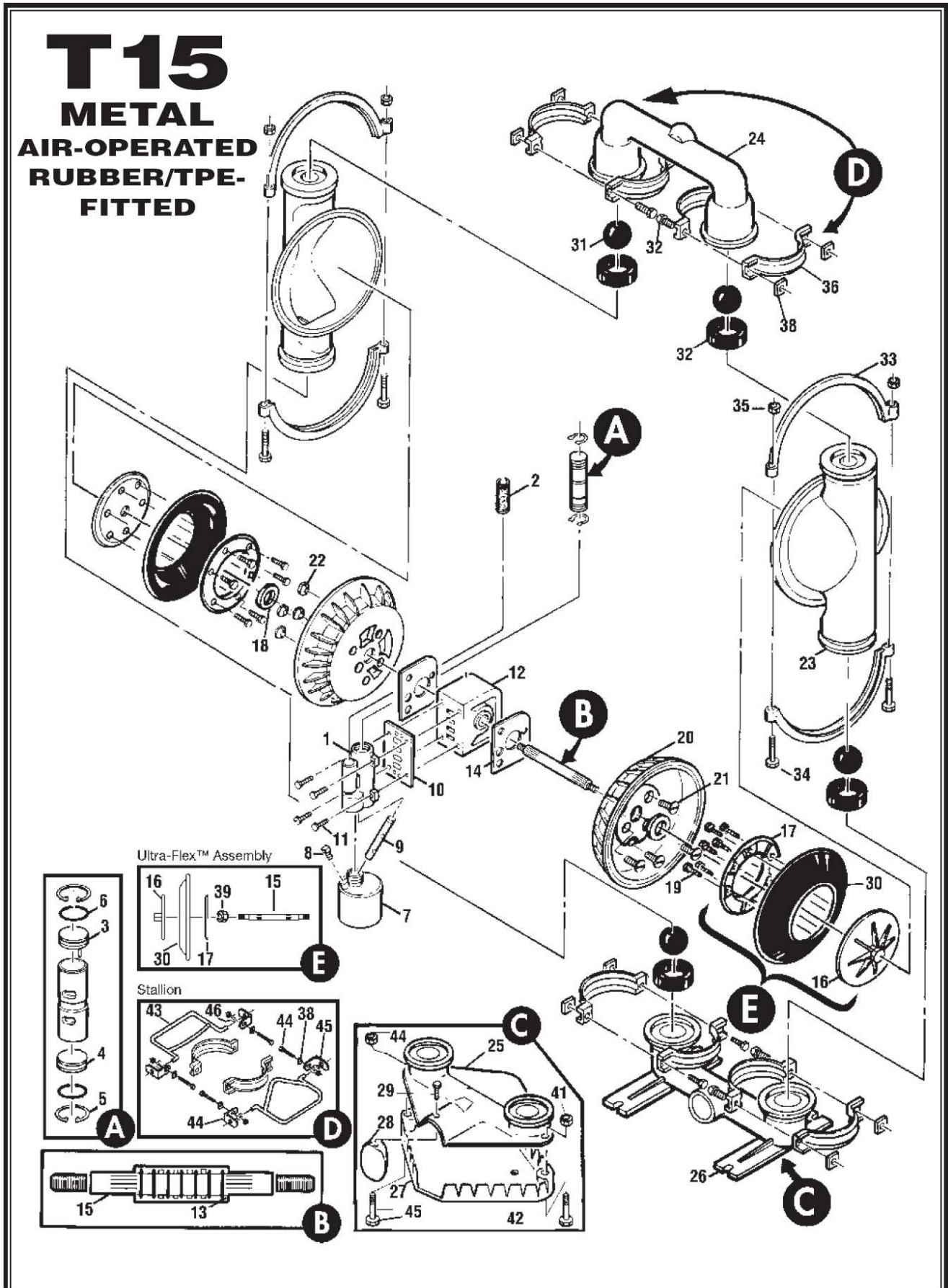
Z.I. Du Val d'Argent

95100 Argenteuil

Tel. : 01.34.11.13.73 / Fax : 01.34.11.96.35

E-mail : tdf@techniquesfluides.fr

Site web : www.techniquesfluides.fr



TECHNIQUES DES FLUIDES

10 Rue Jean Poulmarch, bat. 3

Z.I. Du Val d'Argent

95100 Argenteuil

Tel. : 01.34.11.13.73 / Fax : 01.34.11.96.35

E-mail : tdf@techniquesfluides.fr

Site web : www.techniquesfluides.fr



WILDEN MODEL T15 METAL TEFLON®-FITTED

Item	Description	Qty.	T15/ AAPB P/N	T15/ AAAB P/N	T15/ AAPB/003 P/N	T15/ AAAB/003 P/N	T15/ HAPB P/N	T15/ HSSB P/N	T15/ HWPB P/N	T15/ SAPB P/N	T15/ SSSB P/N	T15/ SWPB P/N	T15/ SSSS P/N	T15/ WAPB P/N	T15/ WWPB P/N	T15/ SSSN/070 P/N
1	Air Valve Assembly ¹	1	15-2000-07	15-2000-07	15-2000-07	15-2000-07	15-2000-07	15-2000-07	15-2000-07	15-2000-07	15-2000-07	15-2000-07	15-2000-07	15-2000-07	15-2000-07	15-2000-06
2	Air Valve Screen	1	08-2500-07	08-2500-07	08-2500-07	08-2500-07	08-2500-07	08-2500-07	08-2500-07	08-2500-07	08-2500-07	08-2500-07	08-2500-07	08-2500-07	08-2500-07	08-2500-03
3	Air Valve End Cap w/Guide (top)	1	15-2300-23	15-2300-23	15-2300-23	15-2300-23	15-2300-23	15-2300-23	15-2300-23	15-2300-23	15-2300-23	15-2300-23	15-2300-23	15-2300-23	15-2300-23	15-2300-23
4	Air Valve End Cap without Guide (bottom)	1	15-2330-23	15-2330-23	15-2330-23	15-2330-23	15-2330-23	15-2330-23	15-2330-23	15-2330-23	15-2330-23	15-2330-23	15-2330-23	15-2330-23	15-2330-23	15-2330-23
5	Air Valve Snap Ring	2	15-2650-03	15-2650-03	15-2650-03	15-2650-03	15-2650-03	15-2650-03	15-2650-03	15-2650-03	15-2650-03	15-2650-03	15-2650-03	15-2650-03	15-2650-03	15-2650-03
6	Air Valve Cap O-Ring	2	15-2390-52	15-2390-52	15-2390-52	15-2390-52	15-2390-52	15-2390-52	15-2390-52	15-2390-52	15-2390-52	15-2390-52	15-2390-52	15-2390-52	15-2390-52	15-2390-52
7	Oil Bottle (Optional)	1	15-2850-01	15-2850-01	15-2850-01	15-2850-01	15-2850-01	15-2850-01	15-2850-01	15-2850-01	15-2850-01	15-2850-01	15-2850-01	15-2850-01	15-2850-01	N/A
8	Plug (Optional)	1	15-7000-07	15-7000-07	15-7000-07	15-7000-07	15-7000-07	15-7000-07	15-7000-07	15-7000-07	15-7000-07	15-7000-07	15-7000-07	15-7000-07	15-7000-07	N/A
9	Capillary Rod (Optional)	1	15-2900-99	15-2900-99	15-2900-99	15-2900-99	15-2900-99	15-2900-99	15-2900-99	15-2900-99	15-2900-99	15-2900-99	15-2900-99	15-2900-99	15-2900-99	N/A
10	Air Valve Gasket — Buna-N	1	15-2600-52	15-2600-52	15-2600-52	15-2600-52	15-2600-52	15-2600-52	15-2600-52	15-2600-52	15-2600-52	15-2600-52	15-2600-52	15-2600-52	15-2600-52	15-2600-52
11	Air Valve Screw	4	08-6000-08	08-6000-08	08-6000-08	08-6000-08	08-6000-08	08-6000-08	08-6000-08	08-6000-08	08-6000-08	08-6000-08	08-6000-08	08-6000-08	08-6000-08	08-6000-08
12	Center Block	1	15-3100-20-225	15-3100-01-225	15-3100-20-225	15-3100-01-225	15-3100-20-225	15-3100-03-225	15-3100-20-225	15-3100-03-225	15-3100-20-225	15-3100-03-225	15-3100-20-225	15-3100-03-225	15-3100-20-225	15-3100-03-225
13	Center Block Glyd™ Ring	7	15-3210-55-225	15-3210-55-225	15-3210-55-225	15-3210-55-225	15-3210-55-225	15-3210-55-225	15-3210-55-225	15-3210-55-225	15-3210-55-225	15-3210-55-225	15-3210-55-225	15-3210-55-225	15-3210-55-225	15-3210-55-225
14	Block Gasket — Buna-N	2	15-3520-52	15-3520-52	15-3520-52	15-3520-52	15-3520-52	15-3520-52	15-3520-52	15-3520-52	15-3520-52	15-3520-52	15-3520-52	15-3520-52	15-3520-52	15-3520-52
15	Shaft	1	15-3800-09-07	15-3800-09-07	15-3800-09-07	15-3800-09-07	15-3800-09-07	15-3800-09-07	15-3800-09-07	15-3800-09-07	15-3800-09-07	15-3800-09-07	15-3800-09-07	15-3800-09-07	15-3800-09-07	15-3800-09-07
16	Piston, Outer	2	15-4600-03	15-4600-03	15-4600-03	15-4600-03	15-4600-04	15-4600-04	15-4600-04	15-4600-03	15-4600-03	15-4600-03	15-4600-03	15-4600-03	15-4600-03	15-4600-03
17	Piston, Inner	2	15-3750-03	15-3750-03	15-3750-03	15-3750-03	15-3750-03	15-3750-03	15-3750-03	15-3750-03	15-3750-03	15-3750-03	15-3750-03	15-3750-03	15-3750-03	15-3750-03
18	Air Chamber	2	15-3650-01	15-3650-01	15-3650-01	15-3650-01	15-3650-01	15-3650-03	15-3650-02	15-3650-01	15-3650-03	15-3650-02	15-3650-03	15-3650-01	15-3650-02	15-3650-03
19	Air Chamber Screw	4	15-6200-08	15-6200-08	15-6200-08	15-6200-08	15-6200-08	15-6200-08	15-6200-08	15-6200-08	15-6200-08	15-6200-08	15-6200-08	15-6200-08	15-6200-08	15-6200-08
20	Air Chamber Cone Nut	4	08-6550-08	08-6550-08	08-6550-08	08-6550-08	08-6550-08	08-6550-08	08-6550-08	08-6550-08	08-6550-08	08-6550-08	08-6550-08	08-6550-08	08-6550-08	08-6550-08
21	Liquid Chamber	2	15-5000-01	15-5000-01	15-5000-01	15-5000-01	15-5000-04	15-5000-04	15-5000-04	15-5000-03	15-5000-03	15-5000-03	15-5000-03	15-5000-02	15-5000-02	15-5000-03
22	Discharge Manifold	1	15-5020-01	15-5020-01	15-5020-01	15-5020-01	15-5020-04	15-5020-04	15-5020-04	15-5020-03	15-5020-03	15-5020-03	15-5020-03	15-5020-02	15-5020-02	15-5020-03-70
23	Inlet Manifold	1	15-5080-01	15-5080-01	15-5080-01	15-5080-01	15-5080-04	15-5080-04	15-5080-04	15-5080-03	15-5080-03	15-5080-03	15-5080-03	15-5080-02	15-5080-02	15-5080-03-70
24	Diaphragm	2	15-1010-55	15-1010-55	15-1010-55	15-1010-55	15-1010-55	15-1010-55	15-1010-55	15-1010-55	15-1010-55	15-1010-55	15-1010-55	15-1010-55	15-1010-55	15-1010-55
25	Back-up Diaphragm	2	15-1060-51	15-1060-51	15-1060-51	15-1060-51	15-1060-51	15-1060-51	15-1060-51	15-1060-51	15-1060-51	15-1060-51	15-1060-51	15-1060-51	15-1060-51	15-1060-51
26	Valve Ball	4	15-1080-55	15-1080-55	15-1080-55	15-1080-55	15-1080-55	15-1080-55	15-1080-55	15-1080-55	15-1080-55	15-1080-55	15-1080-55	15-1080-55	15-1080-55	15-1080-55
27	Valve Seat	4	15-1121-01	15-1121-01	15-1121-01	15-1121-01	15-1121-04	15-1121-04	15-1121-04	15-1121-04	15-1121-04	15-1121-04	15-1121-04	15-1121-04	15-1121-04	15-1121-04
28	Large Clamp Band Assy.	2	15-7300-03	15-7300-03	15-7300-03	15-7300-03	15-7300-03	15-7300-03	15-7300-03	15-7300-03	15-7300-03	15-7300-03	15-7300-03	15-7300-03	15-7300-03	15-7300-03-70
29	Large Carriage Bolt	4	15-6120-03	15-6120-03	15-6120-03	15-6120-03	15-6120-03	15-6120-03	15-6120-03	15-6120-03	15-6120-03	15-6120-03	15-6120-03	15-6120-03	15-6120-03	15-6120-03
30	Large Hex Nut ²	4	15-6420-03	15-6420-03	15-6420-03	15-6420-03	15-6420-03	15-6420-03	15-6420-03	15-6420-03	15-6420-03	15-6420-03	15-6420-03	15-6420-03	15-6420-03	15-6670-03-702
31	Small Clamp Band Assy.	4	15-7100-03	15-7100-03	15-7100-03	15-7100-03	15-7100-03	15-7100-03	15-7100-03	15-7100-03	15-7100-03	15-7100-03	15-7100-03	15-7100-03	15-7100-03	15-7100-03-70
	Washer, Flat, 7/8" (not shown)	4	15-6720-07-70	15-6720-07-70	15-6720-07-70	15-6720-07-70	15-6720-07-70	15-6720-07-70	15-6720-07-70	15-6720-07-70	15-6720-07-70	15-6720-07-70	15-6720-07-70	15-6720-07-70	15-6720-07-70	15-6720-07-70
32	Small Carriage Bolt	8	15-6050-03	15-6050-03	15-6050-03	15-6050-03	15-6050-03	15-6050-03	15-6050-03	15-6050-03	15-6050-03	15-6050-03	15-6050-03	15-6050-03	15-6050-03	15-6050-03
33	Small Hex Nut ²	8	08-6450-03	08-6450-03	08-6450-03	08-6450-03	08-6450-03	08-6450-03	08-6450-03	08-6450-03	08-6450-03	08-6450-03	08-6450-03	08-6450-03	08-6450-03	08-6670-03-723
34	Teflon® Valve Seat O-Ring	4	15-1200-55	15-1200-55	15-1200-55	15-1200-55	15-1200-55	15-1200-55	15-1200-55	15-1200-55	15-1200-55	15-1200-55	15-1200-55	15-1200-55	15-1200-55	15-1200-55
	Muffler (not shown)	1	15-3510-99	15-3510-99	15-3510-99	15-3510-99	15-3510-99	15-3510-99	15-3510-99	15-3510-99	15-3510-99	15-3510-99	15-3510-99	15-3510-99	15-3510-99	15-3510-99
	Washer, Flat (not shown)	8	08-6720-07-70	08-6720-07-70	NA	NA	08-6720-07-70	08-6720-07-70	08-6720-07-70	08-6720-07-70	08-6720-07-70	08-6720-07-70	08-6720-07-70	08-6720-07-70	08-6720-07-70	08-6720-07-70

¹Air Valve Assembly includes parts thru 15-2390-52.

²T15/SSSN pump large clamp band comes with 15-6670-03-70 wing nut and 15-6720-07-70 washer.

³T15/SSSN pump small clamp band comes with 08-6670-03-72 wing nut and 08-6720-07-70 washer.

-003 Specialty Code = Alloy-Fitted

-070 Specialty Code = Saniflo[®]DA

TECHNIQUES DES FLUIDES

10 Rue Jean Poulmarch, bat. 3

Z.I. Du Val d'Argent

95100 Argenteuil

Tel. : 01.34.11.13.73 / Fax : 01.34.11.96.35

E-mail : tdf@techniquesfluides.fr

Site web : www.techniquesfluides.fr



T15 METAL AIR-OPERATED TEFLON®- FITTED

