

# TECHNIQUES DES FLUIDES

10 Rue Jean Poulmarch, bat. 3

Z.I. Du Val d'Argent

95100 Argenteuil

Tel. : 01.34.11.13.73 / Fax : 01.34.11.96.35

E-mail : tdf@techniquesfluides.fr

Site web : www.techniquesfluides.fr



## WILDEN MODEL T8 PLASTIC CHAMP RUBBER-FITTED

Item	Part Description	Qty.	T8/ PAPB	T8/ PSSB	T8/ PWPB	T8/ PCPC-502	T8/ KAPB	T8/ KSSB	T8/ KWPB	T8/ KCPC-502
			P/N	P/N	P/N	P/N	P/N	P/N	P/N	P/N
1	Air Valve Assembly <sup>1</sup>	1	08-2000-07	08-2000-07	08-2000-07	08-2000-05	08-2000-07	08-2000-07	08-2000-07	08-2000-05
2	Air Valve Screen	1	08-2500-07	08-2500-07	08-2500-07	08-2500-07	08-2500-07	08-2500-07	08-2500-07	08-2500-07
3	Air Valve End Cap w/Guide (Top)	1	08-2300-23	08-2300-23	08-2300-23	08-2300-23	08-2300-23	08-2300-23	08-2300-23	08-2300-23
4	Air Valve End Cap w/o Guide (Bottom)	1	08-2330-23	08-2330-23	08-2330-23	08-2330-23	08-2330-23	08-2330-23	08-2330-23	08-2330-23
5	End Cap Cover (Not shown)	2	N/R	N/R	N/R	08-2420-55	N/R	N/R	N/R	08-2420-55
6	End Cap Bolt (Not shown)	2	N/R	N/R	N/R	08-2450-22	N/R	N/R	N/R	08-2450-22
7	Air Valve Snap Ring	2	08-2650-03	08-2650-03	08-2650-03	08-2650-03	08-2650-03	08-2650-03	08-2650-03	08-2650-03
8	Air Valve Bushing (Optional)	1	08-6950-07	08-6950-07	08-6950-07	08-6950-05	08-6950-07	08-6950-07	08-6950-07	08-6950-05
9	Air Valve Cap O-Ring	2	08-2390-52	08-2390-52	08-2390-52	08-2390-52	08-2390-52	08-2390-52	08-2390-52	08-2390-52
10	Oil Bottle (Optional)	1	08-2850-01	08-2850-01	08-2850-01	N/A	08-2850-01	08-2850-01	08-2850-01	N/A
11	Plug (Optional)	1	08-7000-07	08-7000-07	08-7000-07	N/A	08-7000-07	08-7000-07	08-7000-07	N/A
12	Capillary Rod (Optional)	1	08-2900-99	08-2900-99	08-2900-99	N/A	08-2900-99	08-2900-99	08-2900-99	N/A
13	Air Valve Gasket — Buna-N <sup>2</sup>	1	08-2600-52	08-2600-52	08-2600-52	08-2600-52	08-2600-52	08-2600-52	08-2600-52	08-2600-52
14	Air Valve Screw	4	08-6000-03	08-6000-03	08-6000-03	08-6000-05	08-6000-03	08-6000-03	08-6000-03	08-6000-05
15	Center Block	1	08-3100-20	08-3100-03	08-3100-20	08-3100-20	08-3100-20	08-3100-03	08-3100-20	08-3100-20
16	Center Block Glyd™ Ring	7	08-3210-55-225	08-3210-55-225	08-3210-55-225	08-3210-55-225	08-3210-55-225	08-3210-55-225	08-3210-55-225	08-3210-55-225
17	Block Gasket — Buna-N <sup>2</sup>	2	08-3520-52	08-3520-52	08-3520-52	08-3520-52	08-3520-52	08-3520-52	08-3520-52	08-3520-52
18	Shaft	1	08-3800-09-07	08-3800-09-07	08-3800-09-07	08-3800-09-07	08-3800-09-07	08-3800-09-07	08-3800-09-07	08-3800-09-07
19	Shaft, Ultra-Flex™	1	08-3820-09-07	08-3820-09-07	08-3820-09-07	08-3820-09-07	08-3820-09-07	08-3820-09-07	08-3820-09-07	08-3820-09-07
	Piston, Outer	2	08-4550-21-500	08-4550-21-500	08-4550-21-500	08-4550-21-500	08-4550-21-500	08-4550-21-500	08-4550-21-500	08-4550-21-500
	Piston, Outer, Ultra-Flex™	2	08-4560-21	08-4560-21	08-4560-21	08-4560-21	08-4560-21	08-4560-21	08-4560-21	08-4560-21
20	Piston, Inner	2	08-3700-01	08-3700-03	08-3700-01	08-3700-01	08-3700-01	08-3700-03	08-3700-01	08-3700-01
	Piston, Inner, Ultra-Flex™	2	04-3700-08	04-3700-08	04-3700-08	04-3700-08	04-3700-08	04-3700-08	04-3700-08	04-3700-08
21	Air Chamber, Counter Sunk	2	08-3650-01	08-3650-03	08-3650-02	08-3650-05	08-3650-01	08-3650-03	08-3650-02	08-3650-05
22	Air Chamber Screw — 1/4" x 3/8"	3	08-6200-08	08-6200-03	08-6200-08	08-6200-03	08-6200-08	08-6200-03	08-6200-08	08-6200-03
23	Air Chamber Cone Nut 1/4"-16	3	08-6550-08	08-6550-03	08-6550-08	08-6550-03	08-6550-08	08-6550-03	08-6550-08	08-6550-03
24	Liquid Chamber	2	08-5000-20	08-5000-20	08-5000-20	08-5000-20	08-5000-21	08-5000-21	08-5000-21	08-5000-21
25	Discharge Elbow	2	08-5230-20	08-5230-20	08-5230-20	08-5230-20	08-5230-21	08-5230-21	08-5230-21	08-5230-21
26	Inlet Elbow	2	08-5220-20	08-5220-20	08-5220-20	08-5220-20	08-5220-21	08-5220-21	08-5220-21	08-5220-21
27	Manifold T-Section	2	08-5160-20	08-5160-20	08-5160-20	08-5160-20	08-5160-21	08-5160-21	08-5160-21	08-5160-21
28	Ball Guide Bushing	4	08-5350-20-500	08-5350-20-500	08-5350-20-500	08-5350-20-500	08-5350-21-500	08-5350-21-500	08-5350-21-500	08-5350-21-500
29	Valve Seat O-Ring <sup>3</sup>	4	*	*	*	*	*	*	*	*
30	Manifold O-Ring <sup>3</sup>	4	*	*	*	*	*	*	*	*
31	Diaphragm <sup>3</sup>	2	*	*	*	*	*	*	*	*
32	Diaphragm, Backup	2	N/A	N/A	N/A	N/A	N/A	N/A	N/A	N/A
33	Valve Ball <sup>3</sup>	4	*	*	*	*	*	*	*	*
34	Valve Seat	4	08-1120-20-500	08-1120-20-500	08-1120-20-500	08-1120-20-500	08-1120-21-500	08-1120-21-500	08-1120-21-500	08-1120-21-500
35	Large Clamp Band	2	08-7300-03-500	08-7300-03-500	08-7300-03-500	08-7300-05-500	08-7300-03-500	08-7300-03-500	08-7300-03-500	08-7300-05-500
36	Large Carriage Bolt 1/2"-16 x 2 1/2"	4	08-6070-03-500	08-6070-03-500	08-6070-03-500	08-6070-05-500	08-6070-03-500	08-6070-03-500	08-6070-03-500	08-6070-05-500
37	Large Hex Nut 1/2"-16	4	08-6450-03	08-6450-03	08-6450-03	08-6420-05	08-6450-03	08-6450-03	08-6450-03	08-6420-05
38	Medium Clamp Band	4	08-7200-03-500	08-7200-03-500	08-7200-03-500	08-7200-05-500	08-7200-03-500	08-7200-03-500	08-7200-03-500	08-7200-05-500
39	Medium Carriage Bolt 3/4"-18 x 2 1/4"	8	04-6070-03	04-6070-03	04-6070-03	04-6070-05	04-6070-03	04-6070-03	04-6070-03	04-6070-05
40	Medium Hex Nut 3/4"-18	8	08-6400-03	08-6400-03	08-6400-03	08-6400-05	08-6400-03	08-6400-03	08-6400-03	08-6400-05
41	Small Clamp Band	4	08-7100-03-500	08-7100-03-500	08-7100-03-500	08-7100-05-500	08-7100-03-500	08-7100-03-500	08-7100-03-500	08-7100-05-500
42	Small Hex Head Cap Screw 3/4"-18 x 1 1/4"	8	08-6050-03-500	08-6050-03-500	08-6050-03-500	08-6050-05-500	08-6050-03-500	08-6050-03-500	08-6050-03-500	08-6050-05-500
43	Small Square Nut	8	08-6400-03	08-6400-03	08-6400-03	08-6400-05	08-6400-03	08-6400-03	08-6400-03	08-6400-05
44	Muffler (Optional — not shown)	1	08-3510-99	08-3510-99	08-3510-99	08-3510-99	08-3510-99	08-3510-99	08-3510-99	08-3510-99
45	Spacer, Ultra-Flex™	1	08-3860-08	08-3860-08	08-3860-08	08-3860-08	08-3860-08	08-3860-08	08-3860-08	08-3860-08

<sup>1</sup>Air Valve Assembly includes parts through 08-2390-52 (items 2 through 7). To order pump with oil bottle, add letter D to model #. (Example: T8/AAPD.)

<sup>2</sup>Refer to corresponding elastomer chart in Section 10.

<sup>3</sup>-502 Specialty Code = Teflon®-Coated Hardware

All boldface items are primary wear parts.

# TECHNIQUES DES FLUIDES

10 Rue Jean Poulmarch, bat. 3

Z.I. Du Val d'Argent

95100 Argenteuil

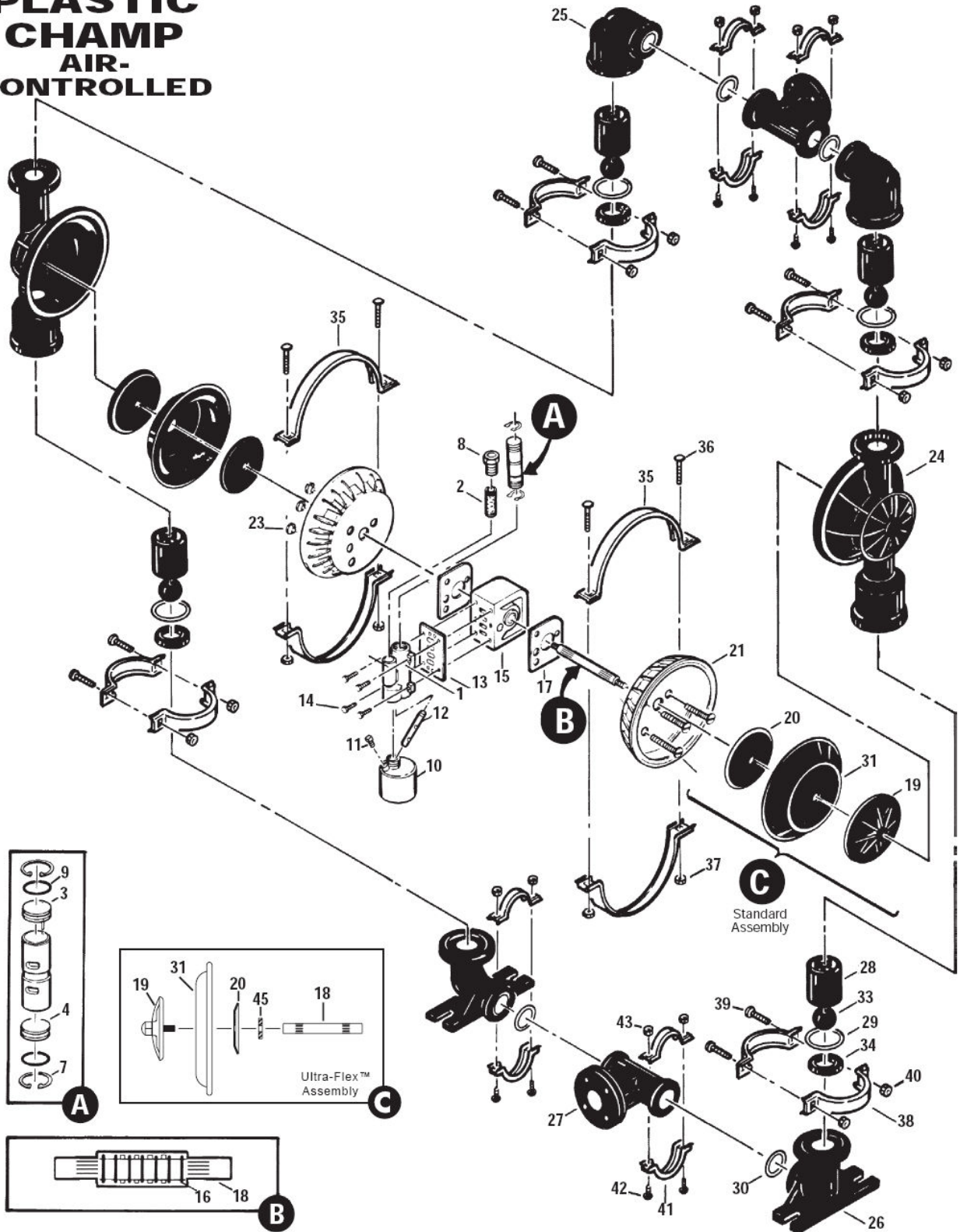
Tel. : 01.34.11.13.73 / Fax : 01.34.11.96.35

E-mail : tdf@techniquesfluides.fr

Site web : www.techniquesfluides.fr



## T8 PLASTIC CHAMP AIR- CONTROLLED



# TECHNIQUES DES FLUIDES

10 Rue Jean Poulmarch, bat. 3

Z.I. Du Val d'Argent

95100 Argenteuil

Tel. : 01.34.11.13.73 / Fax : 01.34.11.96.35

E-mail : tdf@techniquesfluides.fr

Site web : www.techniquesfluides.fr



## WILDEN MODEL T8 PLASTIC CHAMP TEFLON®-FITTED

Item	Part Description	Qty.	T8/PAPB/ TF/TF/PTV	T8/PSSB/ TF/TF/PTV	T8/PWPB/ TF/TF/PTV	T8/PCPC/ TF/TF/PTV-502	T8/KAPB/ TF/TF/KTV	T8/KSSB/ TF/TF/KTV	T8/KWPB/ TF/TF/KTV	T8/KCPC/ TF/TF/KTV-502
			P/N	P/N	P/N	P/N	P/N	P/N	P/N	P/N
1	<b>Air Valve Assembly<sup>1</sup></b>	1	<b>08-2000-07</b>	<b>08-2000-07</b>	<b>08-2000-07</b>	<b>08-2000-05</b>	<b>08-2000-07</b>	<b>08-2000-07</b>	<b>08-2000-07</b>	<b>08-2000-05</b>
2	Air Valve Screen	1	08-2500-07	08-2500-07	08-2500-07	08-2500-07	08-2500-07	08-2500-07	08-2500-07	08-2500-07
3	Air Valve End Cap w/Guide (Top)	1	08-2300-23	08-2300-23	08-2300-23	08-2300-23	08-2300-23	08-2300-23	08-2300-23	08-2300-23
4	Air Valve End Cap w/o Guide (Bottom)	1	08-2330-23	08-2330-23	08-2330-23	08-2330-23	08-2330-23	08-2330-23	08-2330-23	08-2330-23
5	End Cap Cover (Not shown)	2	N/R	N/R	N/R	08-2420-55	N/R	N/R	N/R	08-2420-55
6	End Cap Bolt (Not shown)	2	N/R	N/R	N/R	08-2450-22	N/R	N/R	N/R	08-2450-22
7	Air Valve Snap Ring	2	08-2650-03	08-2650-03	08-2650-03	08-2650-03	08-2650-03	08-2650-03	08-2650-03	08-2650-03
8	Air Valve Bushing (Optional)	1	08-6950-07	08-6950-07	08-6950-07	08-6950-05	08-6950-07	08-6950-07	08-6950-07	08-6950-05
9	Air Valve Cap O-Ring	2	08-2390-52	08-2390-52	08-2390-52	08-2390-52	08-2390-52	08-2390-52	08-2390-52	08-2390-52
10	Oil Bottle (Optional)	1	08-2850-01	08-2850-01	08-2850-01	N/A	08-2850-01	08-2850-01	08-2850-01	N/A
11	Plug (Optional)	1	08-7000-07	08-7000-07	08-7000-07	N/A	08-7000-07	08-7000-07	08-7000-07	N/A
12	Capillary Rod (Optional)	1	08-2900-99	08-2900-99	08-2900-99	N/A	08-2900-99	08-2900-99	08-2900-99	N/A
13	<b>Air Valve Gasket — Buna-N<sup>2</sup></b>	1	<b>08-2600-52</b>	<b>08-2600-52</b>	<b>08-2600-52</b>	<b>08-2600-52</b>	<b>08-2600-52</b>	<b>08-2600-52</b>	<b>08-2600-52</b>	<b>08-2600-52</b>
14	Air Valve Screw	4	08-6000-03	08-6000-03	08-6000-03	08-6000-05	08-6000-03	08-6000-03	08-6000-03	08-6000-05
15	Center Block	1	08-3100-20	08-3100-03	08-3100-20	08-3100-20	08-3100-20	08-3100-03	08-3100-20	08-3100-20
16	<b>Center Block Glyd™ Ring</b>	7	<b>08-3210-55-225</b>	<b>08-3210-55-225</b>	<b>08-3210-55-225</b>	<b>08-3210-55-225</b>	<b>08-3210-55-225</b>	<b>08-3210-55-225</b>	<b>08-3210-55-225</b>	<b>08-3210-55-225</b>
17	Block Gasket — Buna-N <sup>2</sup>	2	08-3520-52	08-3520-52	08-3520-52	08-3520-52	08-3520-52	08-3520-52	08-3520-52	08-3520-52
18	Shaft	1	08-3820-09-07	08-3820-09-07	08-3820-09-07	08-3820-09-07	08-3820-09-07	08-3820-09-07	08-3820-09-07	08-3820-09-07
19	Piston, Outer	2	08-4600-21-500	08-4600-21-500	08-4600-21-500	08-4600-21-500	08-4600-21-500	08-4600-21-500	08-4600-21-500	08-4600-21-500
20	Piston, Inner	2	08-3750-01	08-3750-03	08-3750-01	08-3750-01	08-3750-01	08-3750-01	08-3750-01	08-3750-01
21	Air Chamber, Counter Sunk	2	08-3650-01	08-3650-03	08-3650-02	08-3650-05	08-3650-01	08-3650-03	08-3650-02	08-3650-05
22	Air Chamber Screw - 3/8"-16 x 3 3/8"	3	08-6200-08	08-6200-03	08-6200-08	08-6200-03	08-6200-08	08-6200-03	08-6200-08	08-6200-03
23	Air Chamber Cone Nut 3/8"-16	3	08-6550-08	08-6550-03	08-6550-08	08-6550-03	08-6550-08	08-6550-03	08-6550-08	08-6550-03
24	Liquid Chamber	2	08-5000-20	08-5000-20	08-5000-20	08-5000-20	08-5000-21	08-5000-21	08-5000-21	08-5000-21
25	Discharge Elbow	2	08-5230-20	08-5230-20	08-5230-20	08-5230-20	08-5230-21	08-5230-21	08-5230-21	08-5230-21
26	Inlet Elbow	2	08-5220-20	08-5220-20	08-5220-20	08-5220-20	08-5220-21	08-5220-21	08-5220-21	08-5220-21
27	Manifold T-Section	2	08-5160-20	08-5160-20	08-5160-20	08-5160-20	08-5160-21	08-5160-21	08-5160-21	08-5160-21
28	Ball Guide Bushing	4	08-5350-20-500	08-5350-20-500	08-5350-20-500	08-5350-20-500	08-5350-21-500	08-5350-21-500	08-5350-21-500	08-5350-21-500
29	Valve Seat O-Ring	4	<b>08-1200-60-500</b>	<b>08-1200-60-500</b>	<b>08-1200-60-500</b>	<b>08-1200-60-500</b>	<b>08-1200-60-500</b>	<b>08-1200-60-500</b>	<b>08-1200-60-500</b>	<b>08-1200-60-500</b>
30	Manifold O-Ring	4	08-1300-60-500	08-1300-60-500	08-1300-60-500	08-1300-60-500	08-1300-60-500	08-1300-60-500	08-1300-60-500	08-1300-60-500
31	Diaphragm	2	<b>08-1010-55</b>	<b>08-1010-55</b>	<b>08-1010-55</b>	<b>08-1010-55</b>	<b>08-1010-55</b>	<b>08-1010-55</b>	<b>08-1010-55</b>	<b>08-1010-55</b>
32	Diaphragm, Backup <sup>3</sup>	2	<b>08-1060-51</b>	<b>08-1060-51</b>	<b>08-1060-51</b>	<b>08-1060-51</b>	<b>08-1060-51</b>	<b>08-1060-51</b>	<b>08-1060-51</b>	<b>08-1060-51</b>
33	Valve Ball	4	<b>08-1080-55</b>	<b>08-1080-55</b>	<b>08-1080-55</b>	<b>08-1080-55</b>	<b>08-1080-55</b>	<b>08-1080-55</b>	<b>08-1080-55</b>	<b>08-1080-55</b>
34	Valve Seat	4	<b>08-1120-20-500</b>	<b>08-1120-20-500</b>	<b>08-1120-20-500</b>	<b>08-1120-20-500</b>	<b>08-1120-21-500</b>	<b>08-1120-21-500</b>	<b>08-1120-21-500</b>	<b>08-1120-21-500</b>
35	Large Clamp Band	2	08-7300-03-500	08-7300-03-500	08-7300-03-500	08-7300-05-500	08-7300-03-500	08-7300-03-500	08-7300-03-500	08-7300-05-500
36	Large Carriage Bolt 3/8"-16 x 2 1/2"	4	08-6070-03-500	08-6070-03-500	08-6070-03-500	08-6070-05-500	08-6070-03-500	08-6070-03-500	08-6070-03-500	08-6070-05-500
37	Large Hex Nut 3/8"-16	4	08-6450-03	08-6450-03	08-6450-03	08-6420-05	08-6450-03	08-6450-03	08-6450-03	08-6420-05
38	Medium Clamp Band	4	08-7200-03-500	08-7200-03-500	08-7200-03-500	08-7200-05-500	08-7200-03-500	08-7200-03-500	08-7200-03-500	08-7200-05-500
39	Medium Carriage Bolt 3/8"-18 x 2 1/2"	8	04-6070-03	04-6070-03	04-6070-03	04-6070-05	04-6070-03	04-6070-03	04-6070-03	04-6070-05
40	Medium Hex Nut 3/8"-18	8	08-6400-03	08-6400-03	08-6400-03	08-6400-05	08-6400-03	08-6400-03	08-6400-03	08-6400-05
41	Small Clamp Band	4	08-7100-03-500	08-7100-03-500	08-7100-03-500	08-7100-05-500	08-7100-03-500	08-7100-03-500	08-7100-03-500	08-7100-05-500
42	Small Hex Head Cap Screw 3/8"-18 x 1 1/4"	8	08-6050-03-500	08-6050-03-500	08-6050-03-500	08-6050-05-500	08-6050-03-500	08-6050-03-500	08-6050-03-500	08-6050-05-500
43	Small Square Nut	8	08-6400-03	08-6400-03	08-6400-03	08-6400-05	08-6400-03	08-6400-03	08-6400-03	08-6400-05
44	Muffler (Optional — not shown)	1	08-3510-99	08-3510-99	08-3510-99	08-3510-99	08-3510-99	08-3510-99	08-3510-99	08-3510-99

<sup>1</sup>Air Valve Assembly includes parts through 08-2390-52 (items 2 through 7). To order pump with oil bottle, add letter D to model #. (Example: T8/AAPD.)

<sup>2</sup>Santoprene back-up diaphragms, P/N 08-1060-56, are available upon request.

-502 Specialty Code = Teflon®-Coated Hardware

All boldface items are primary wear parts.



# TECHNIQUES DES FLUIDES

10 Rue Jean Poulmarch, bat. 3

Z.I. Du Val d'Argent

95100 Argenteuil

Tel. : 01.34.11.13.73 / Fax : 01.34.11.96.35

E-mail : tdf@techniquesfluides.fr

Site web : www.techniquesfluides.fr



## ELASTOMER OPTIONS

### T8 PLASTIC

Material	Traditional Diaphragms (2)	Ultra-Flex™ Diaphragms (2)	Valve Seat* O-Rings (4)	Manifold O-Rings (4)	Valve Ball (4)
Polyurethane	08-1010-50	N/A	08-1200-50-500	08-1300-50-500	08-1080-50
Neoprene	08-1010-51	08-1020-51	N/A	N/A	08-1080-51
Buna-N*	08-1010-52	08-1020-52	08-1200-52-500	08-1300-52-500	08-1080-52
Nordel* (EPDM)	08-1010-54	08-1020-54	N/A	N/A	08-1080-54
Viton*	08-1010-53	08-1020-53	N/A	N/A	08-1080-53
Saniflex™	08-1010-56	N/A	N/A	N/A	08-1080-56
Teflon® PTFE	08-1010-55 <sup>3</sup>	N/A	N/A	N/A	08-1080-55
Neoprene Backup	08-1060-51	N/A	N/A	N/A	N/A
Wil-Flex™	08-1010-58	N/A	N/A	N/A	08-1080-58
Teflon® Encap. (Viton®)	N/A	N/A	08-1200-60-500	08-1300-60-500	N/A

#### NOTES

Teflon®-encapsulated Viton® O-rings, P/N 08-1200-60-500 and P/N 08-1300-60-500, are standard on all Teflon®-fitted pumps.

Teflon® diaphragm, P/N 08-1010-55, must be used with Neoprene back-up diaphragms, P/N 08-1060-51.

\*NOTE: Rubber valve seats do not require an O-ring.