

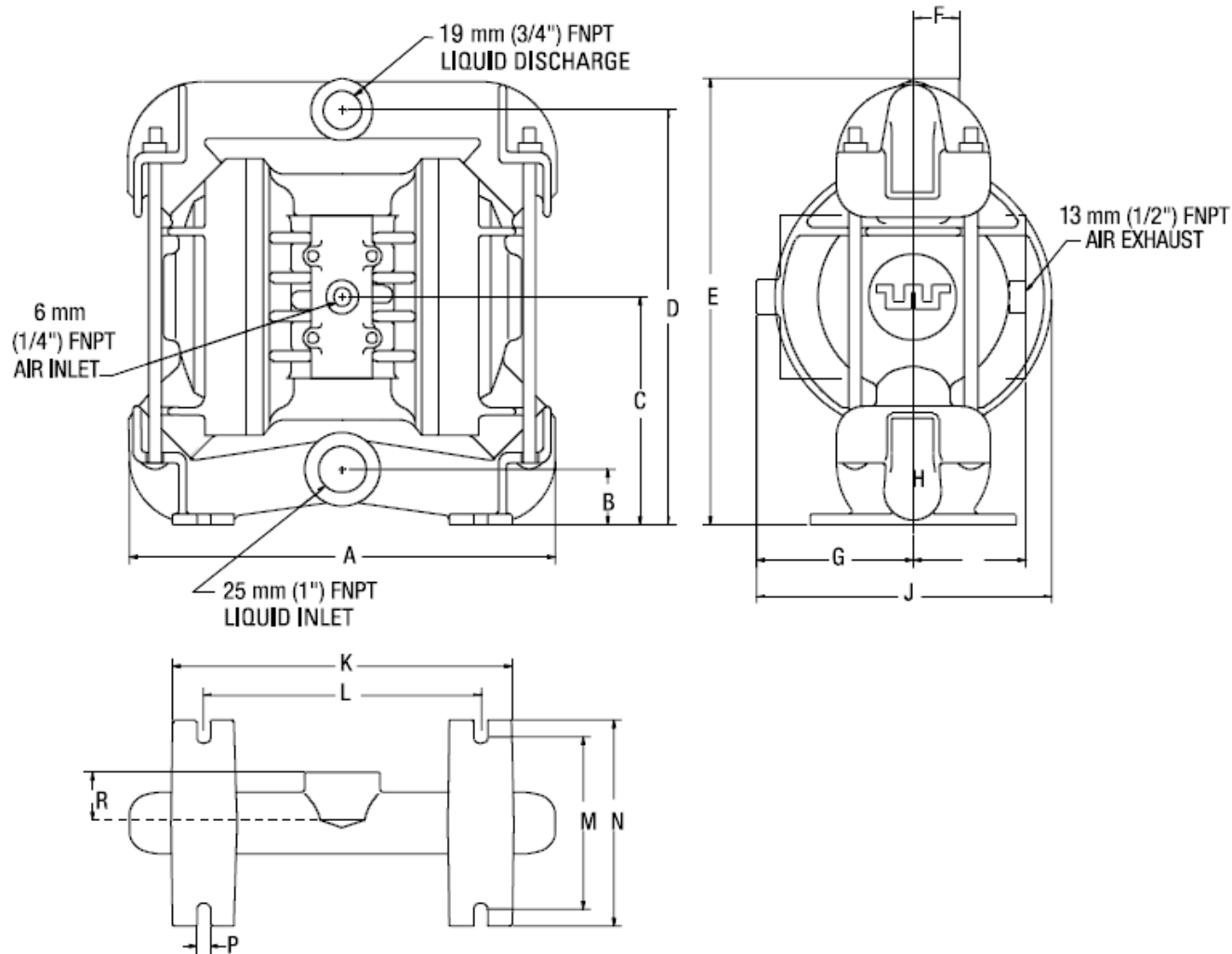
TECHNIQUES DES FLUIDES

7, Rue de la Fosse aux Loups
95100 Argenteuil
Tel. : 01.34.11.13.73 / Fax : 01.34.11.96.35

E-mail : tdf@techniquesfluides.fr
Site web : www.techniquesfluides.fr



TZ2 METAL



DIMENSIONS

ITEM	METRIC (mm)	STANDARD (inch)
A	267	10.5
B	36	1.4
C	137	5.4
D	254	10.0
E	279	11.0
F	28	1.1
G	97	3.8
H	76	3.0
J	185	7.3
K	211	8.3
L	173	6.8
M	107	4.2
N	127	5.0
P	8	0.3
R	33	1.3

BSPT threads available.

TECHNIQUES DES FLUIDES

7, Rue de la Fosse aux Loups
95100 Argenteuil
Tel. : 01.34.11.13.73 / Fax : 01.34.11.96.35

E-mail : tdf@techniquesfluides.fr
Site web : www.techniquesfluides.fr



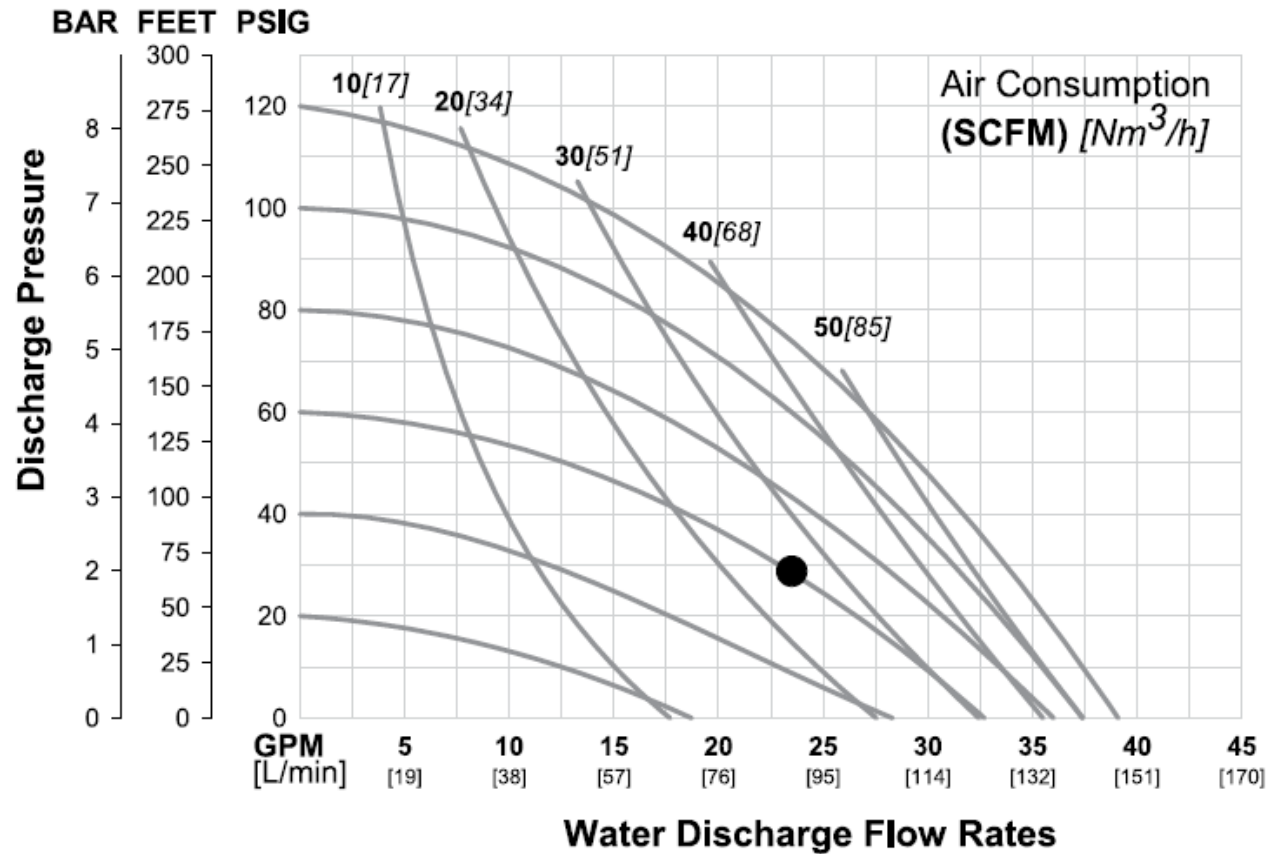
TZ2 METAL RUBBER-FITTED

Height..... 279 mm (11.0")
Width..... 267 mm (10.5")
Depth..... 185 mm (7.3")
Ship Weight..... 12 kg (26 lbs.)
Air Inlet..... 6 mm (1/4")
Inlet..... 25 mm (1")
Outlet..... 19 mm (3/4")
Suction Lift..... 6.4 m Dry (21.0')
9.0 m Wet (29.5')
Disp. Per Stroke..... 0.3 l (0.09 gal.)¹
Max. Flow Rate..... 148 lpm (39.1 gpm)
Max. Size Solids..... 3.2 mm (1/8")

¹Displacement per stroke was calculated at 4.8 bar (70 psig) air inlet pressure against a 2 bar (30 psig) head pressure.

EXAMPLE: To pump 87 lpm (23 gpm) against a pressure of 2.1 bar (30 psi) requires 4.1 bar (60 psig) and 42.5 Nm³/h (25 scfm) air consumption. (See dot on chart.)

CAUTION: Do not exceed 8.6 bar (125 psig) air supply pressure.



Flow rates indicated on chart were determined by pumping water.

For optimum life and performance, pumps should be specified so that daily operation parameters will fall in the center of the pump performance curve.