

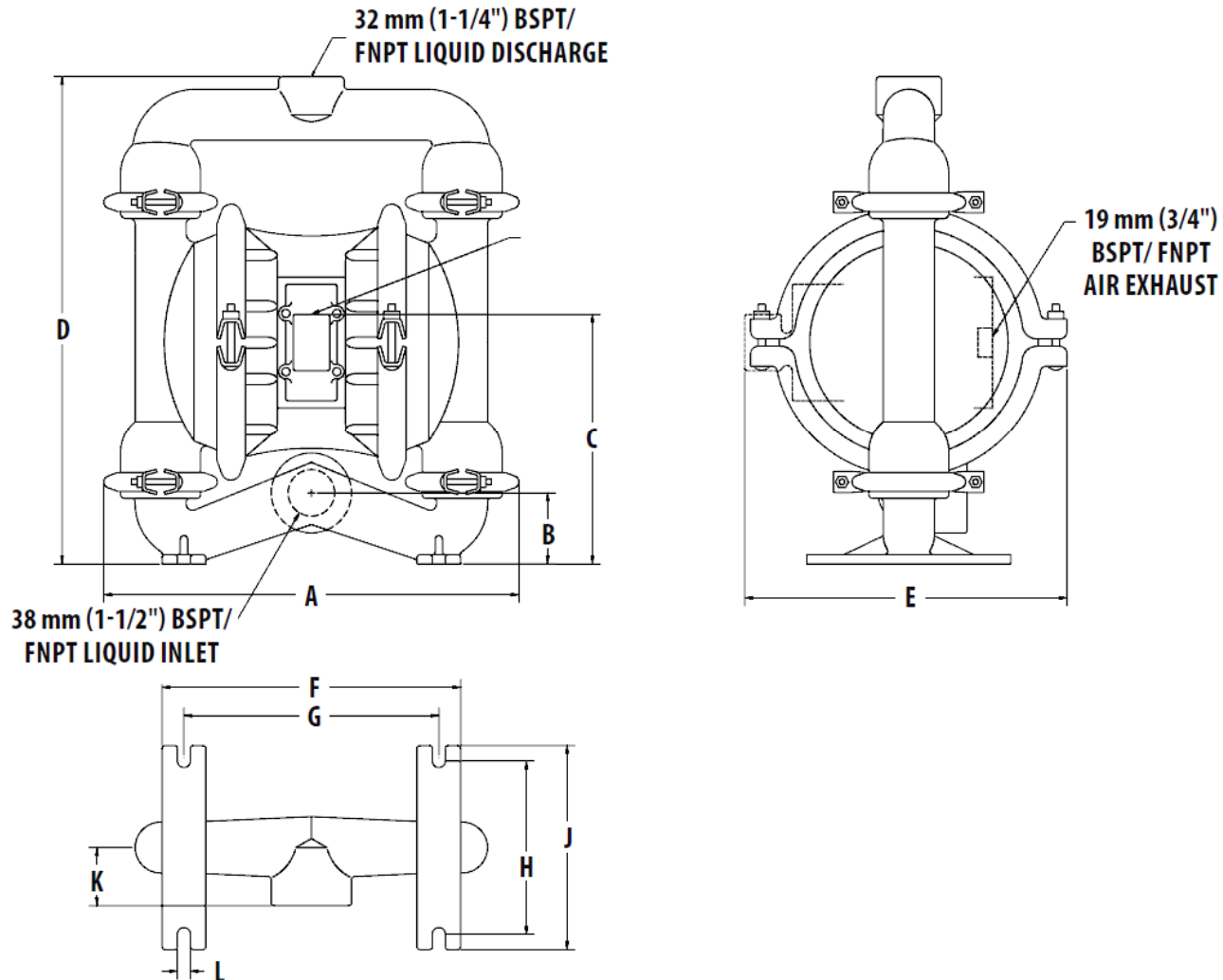
# TECHNIQUES DES FLUIDES

7, Rue de la Fosse aux Loups  
95100 Argenteuil  
Tel. : 01.34.11.13.73 / Fax : 01.34.11.96.35

E-mail : tdf@techniquesfluides.fr  
Site web : www.techniquesfluides.fr



## TZ4 METAL



## DIMENSIONS

ITEM	METRIC (mm)	STANDARD (inch)
A	391	15.4
B	63	2.5
C	219	8.6
D	442	17.4
E	285	11.2
F	262	10.3
G	224	8.8
H	152	6.0
J	178	7.0
K	67	2.6
L	11	0.4

*BSPT threads available.*



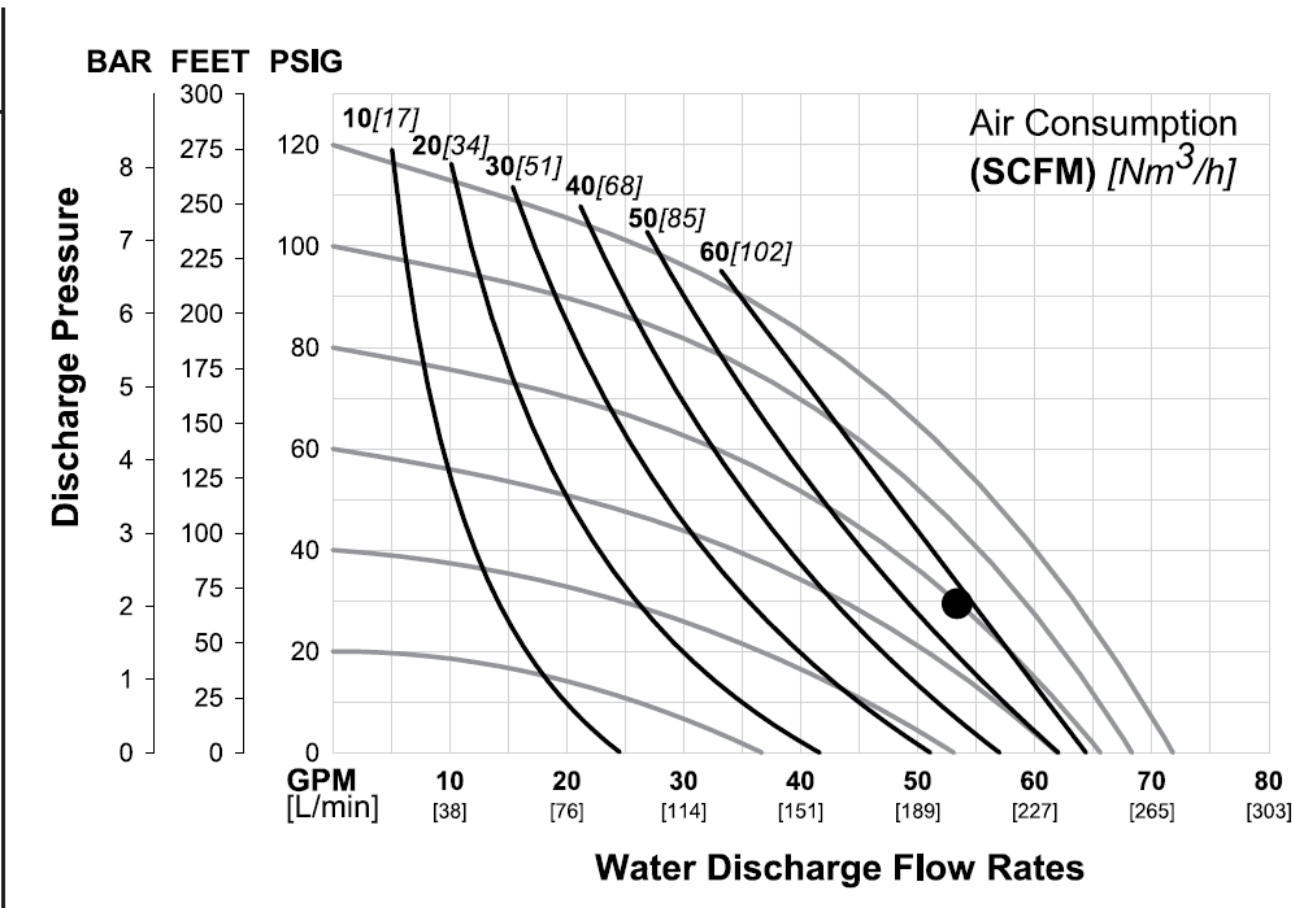
## TZ4 METAL RUBBER-FITTED

Height ..... 442 mm (17.4")  
 Width ..... 391 mm (15.4")  
 Depth ..... 285 mm (11.2")  
 Ship Weight ..... Aluminum 17.5 kg (38 lbs.)  
                                 Stainless Steel 26.2 kg (57 lbs.)  
                                 Cast Iron 26.2 kg (57 lbs.)  
 Air Inlet ..... 13 mm (1/2")  
 Inlet ..... 38 mm (1-1/2")  
 Outlet ..... 32 mm (1-1/4")  
 Suction Lift ..... 7.0 m Dry (22.9')  
                                 9.0 m Wet (29.5')  
 Disp. Per Stroke ..... 1.0 l (0.27 gal.)<sup>1</sup>  
 Max. Flow Rate ..... 272 lpm (71.8 gpm)  
 Max. Size Solids ..... 4.8 mm (3/16")

<sup>1</sup>Displacement per stroke was calculated at 4.8 bar (70 psig) air inlet pressure against a 2 bar (30 psig) head pressure.

**EXAMPLE:** To pump 201 lpm (53 gpm) against a pressure of 2.1 bar (30 psi) requires 5.5 bar (80 psig) and 96.9 Nm<sup>3</sup>/h (57 scfm) air consumption. (See dot on chart.)

**CAUTION: Do not exceed 8.6 bar (125 psig) air supply pressure.**



Flow rates indicated on chart were determined by pumping water.

For optimum life and performance, pumps should be specified so that daily operation parameters will fall in the center of the pump performance curve.