

TECHNIQUES DES FLUIDES

10 Rue Jean Poulmarch, bat. 3

Z.I. Du Val d'Argent

95100 Argenteuil

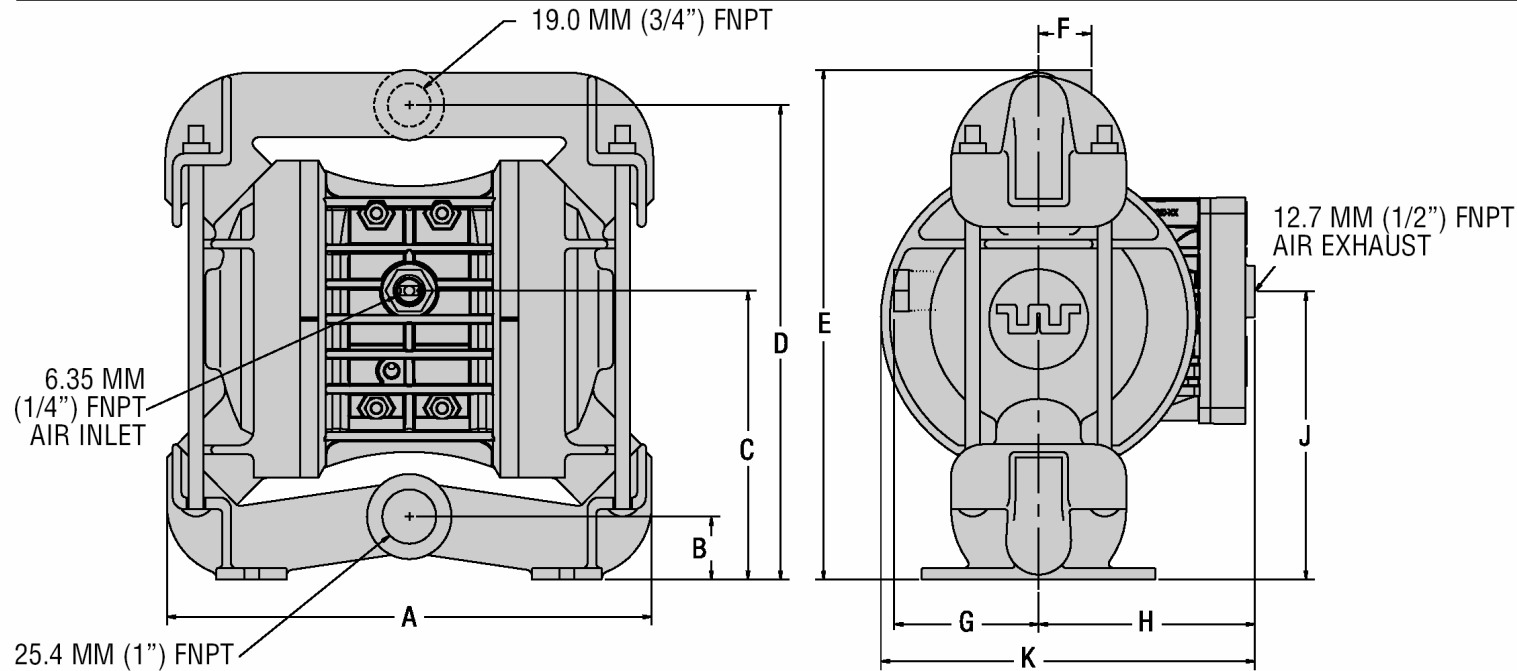
Tel. : 01.34.11.13.73 / Fax : 01.34.11.96.35

E-mail : tdf@techniquesfluides.fr

Site web : www.techniquesfluides.fr



WILDEN MODEL P2 METAL



| DIMENSIONS – P2 (METAL) | | |
|-------------------------|-------------|-----------------|
| ITEM | METRIC (mm) | STANDARD (inch) |
| A | 267.5 | 10.53 |
| B | 36.5 | 1.43 |
| C | 153.2 | 6.03 |
| D | 254.0 | 10 |
| E | 279.4 | 11 |
| F | 28.6 | 1.12 |
| G | 77.0 | 3.03 |
| H | 116.7 | 4.59 |
| J | 152.4 | 6 |
| K | 200.8 | 7.90 |
| L | 209.6 | 8.25 |
| M | 171.5 | 6.75 |
| N | 106.4 | 4.18 |
| P | 127.0 | 5 |
| R | 7.9 | .31 |
| S | 31.8 | 1.25 |

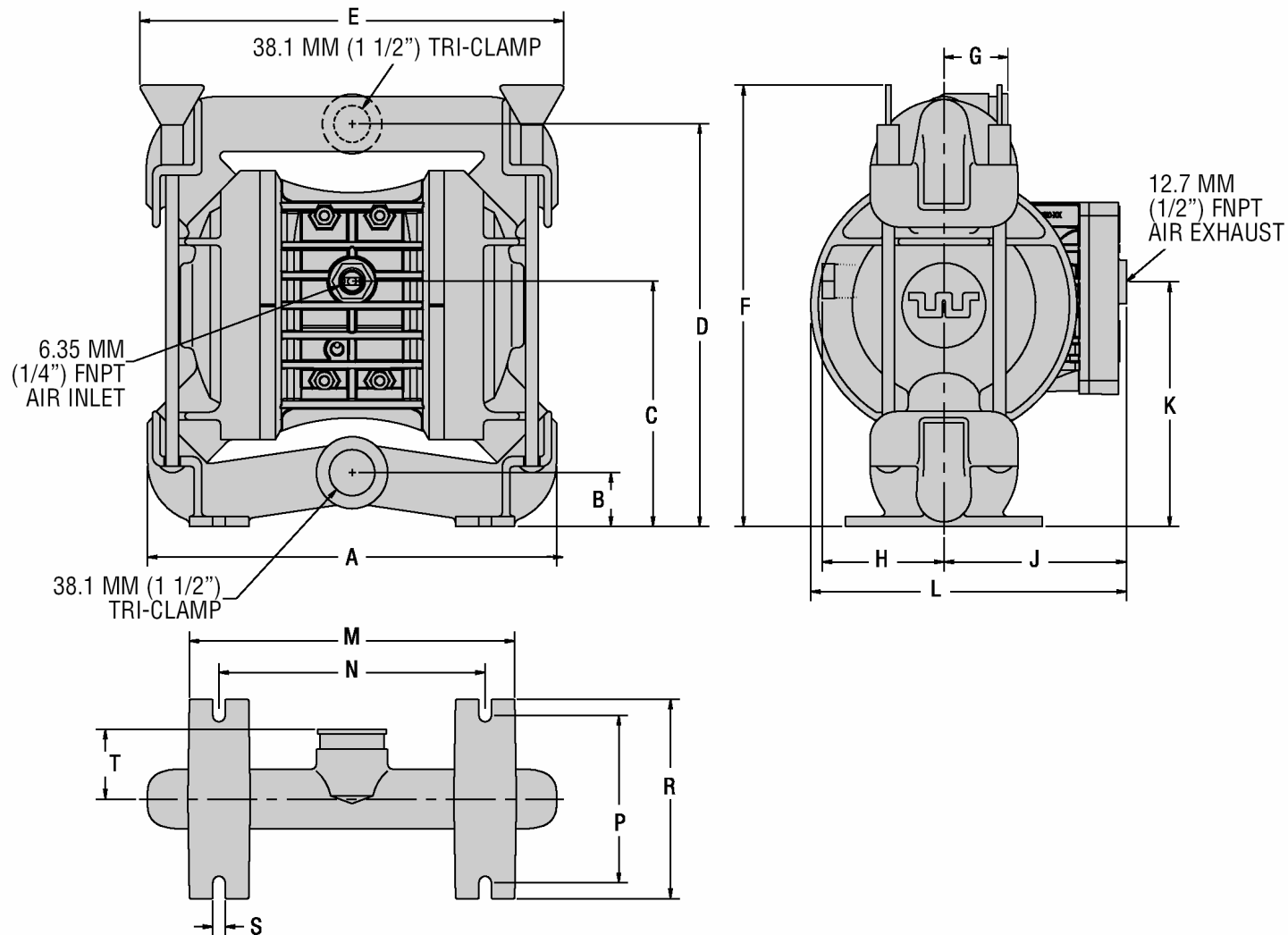
TECHNIQUES DES FLUIDES

10 Rue Jean Poulmarch, bat. 3
 Z.I. Du Val d'Argent
 95100 Argenteuil
 Tel. : 01.34.11.13.73 / Fax : 01.34.11.96.35

E-mail : tdf@techniquesfluides.fr
 Site web : www.techniquesfluides.fr



WILDEN MODEL P2 METAL SANIFLO^{FDA}



| DIMENSIONS – P2 SANIFLO ^{FDA} (METAL) | | |
|--|-------------|-----------------|
| ITEM | METRIC (mm) | STANDARD (inch) |
| A | 263.5 | 10.37 |
| B | 34.9 | 1.37 |
| C | 157.2 | 6.18 |
| D | 255.6 | 10.06 |
| E | 266.7 | 10.5 |
| F | 295.3 | 11.62 |
| G | 41.3 | 1.62 |
| H | 77.0 | 3.83 |
| J | 116.7 | 4.59 |
| K | 154.8 | 6.09 |
| L | 203.2 | 8 |
| M | 209.6 | 8.25 |
| N | 171.5 | 6.75 |
| P | 106.4 | 4.18 |
| R | 127.0 | 5 |
| S | 7.9 | .31 |
| T | 43.6 | 1.71 |

TECHNIQUES DES FLUIDES

10 Rue Jean Poulmarch, bat. 3

Z.I. Du Val d'Argent

95100 Argenteuil

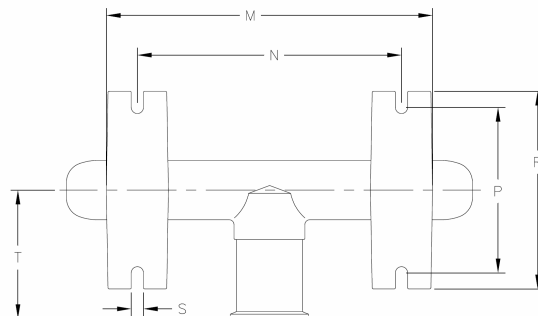
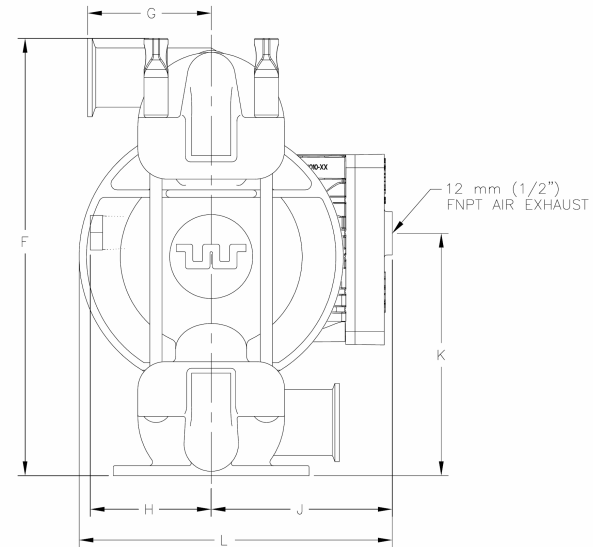
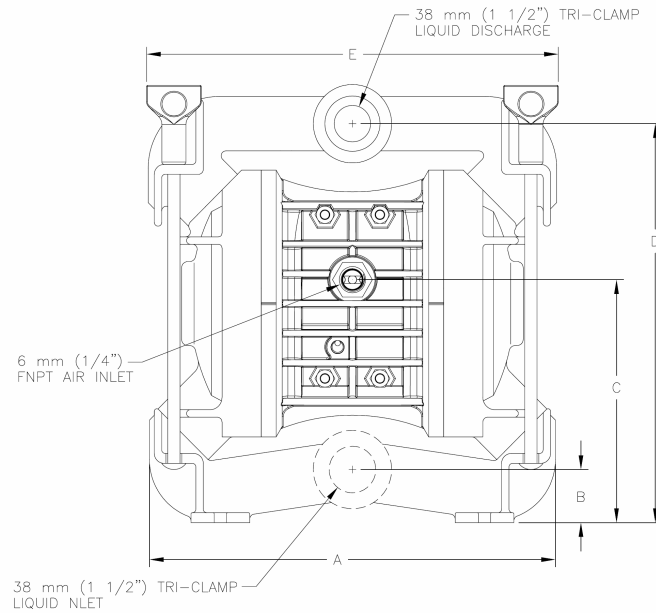
Tel. : 01.34.11.13.73 / Fax : 01.34.11.96.35

E-mail : tdf@techniquesfluides.fr

Site web : www.techniquesfluides.fr



WILDEN MODEL P2 METAL SANIFLO^{FDA} (nouveau design)



| DIMENSIONS - P2 SANIFLO ^{FDA} (METAL) | | |
|--|-------------|-----------------|
| ITEM | METRIC (mm) | STANDARD (inch) |
| A | 264 | 10.4 |
| B | 36 | 1.4 |
| C | 157 | 6.2 |
| D | 257 | 10.1 |
| E | 254 | 10.0 |
| F | 282 | 11.1 |
| G | 79 | 3.1 |
| H | 76 | 3.0 |
| J | 117 | 4.6 |
| K | 155 | 6.1 |
| L | 203 | 8.0 |
| M | 211 | 8.3 |
| N | 173 | 6.8 |
| P | 107 | 4.2 |
| R | 127 | 5.0 |
| S | 8 | .3 |
| T | 84 | 3.3 |

REV B

TECHNIQUES DES FLUIDES

10 Rue Jean Poulmarch, bat. 3

Z.I. Du Val d'Argent

95100 Argenteuil

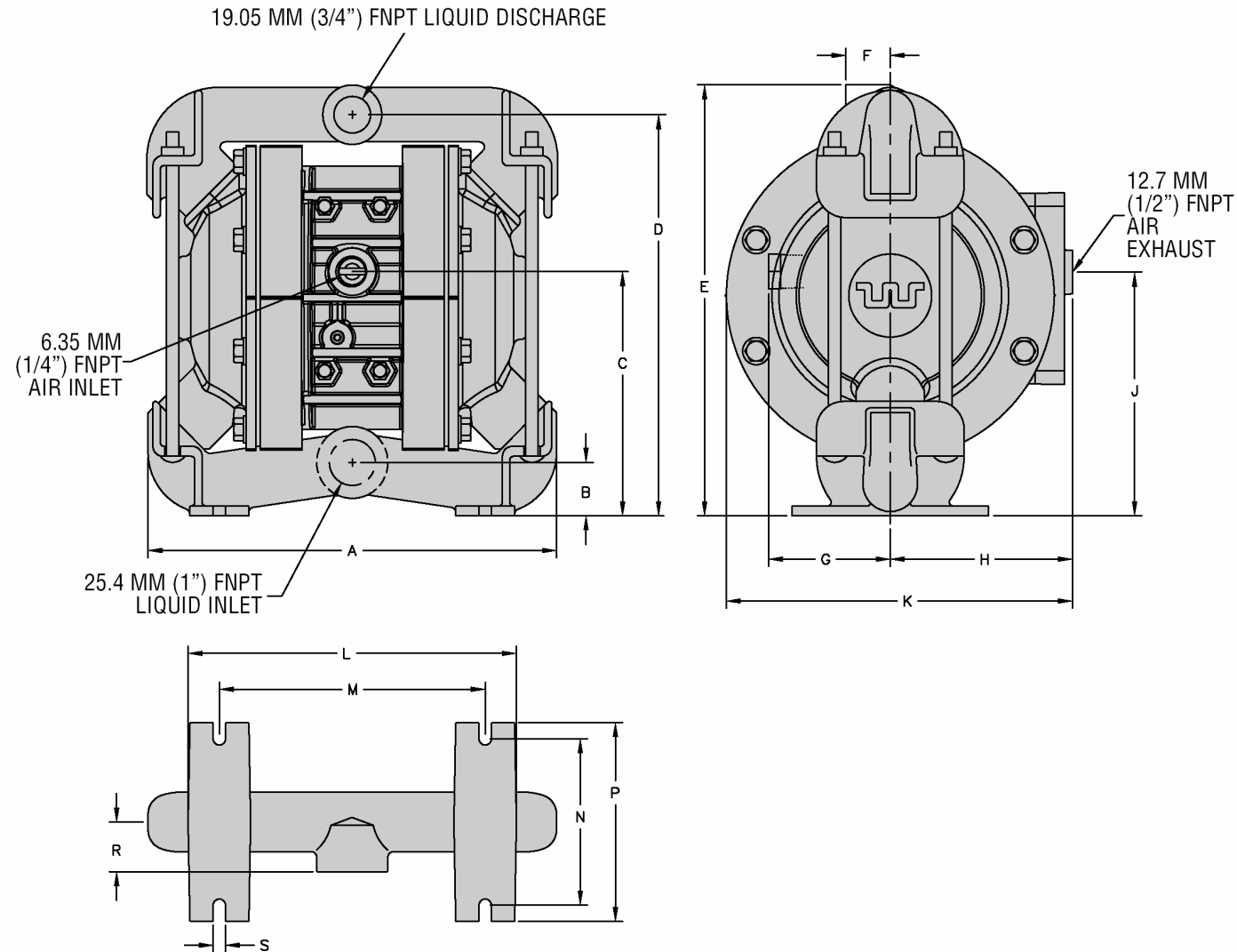
Tel. : 01.34.11.13.73 / Fax : 01.34.11.96.35

E-mail : tdf@techniquesfluides.fr

Site web : www.techniquesfluides.fr



MODEL P2 METAL BOLTED



| DIMENSIONS – P2 METAL BOLTED | | |
|------------------------------|-------------|-----------------|
| ITEM | METRIC (mm) | STANDARD (inch) |
| A | 267 | 10.53 |
| B | 37 | 1.44 |
| C | 153 | 6.03 |
| D | 254 | 10.00 |
| E | 279 | 11.00 |
| F | 29 | 1.13 |
| G | 77 | 3.03 |
| H | 117 | 4.59 |
| J | 152 | 6.00 |
| K | 228 | 8.98 |
| L | 210 | 8.25 |
| M | 171 | 6.75 |
| N | 106 | 4.19 |
| P | 127 | 5.00 |
| R | 32 | 1.25 |
| S | 8 | .31 |

TECHNIQUES DES FLUIDES

10 Rue Jean Poulmarch, bat. 3
 Z.I. Du Val d'Argent
 95100 Argenteuil
 Tel. : 01.34.11.13.73 / Fax : 01.34.11.96.35

E-mail : tdf@techniquesfluides.fr
 Site web : www.techniquesfluides.fr



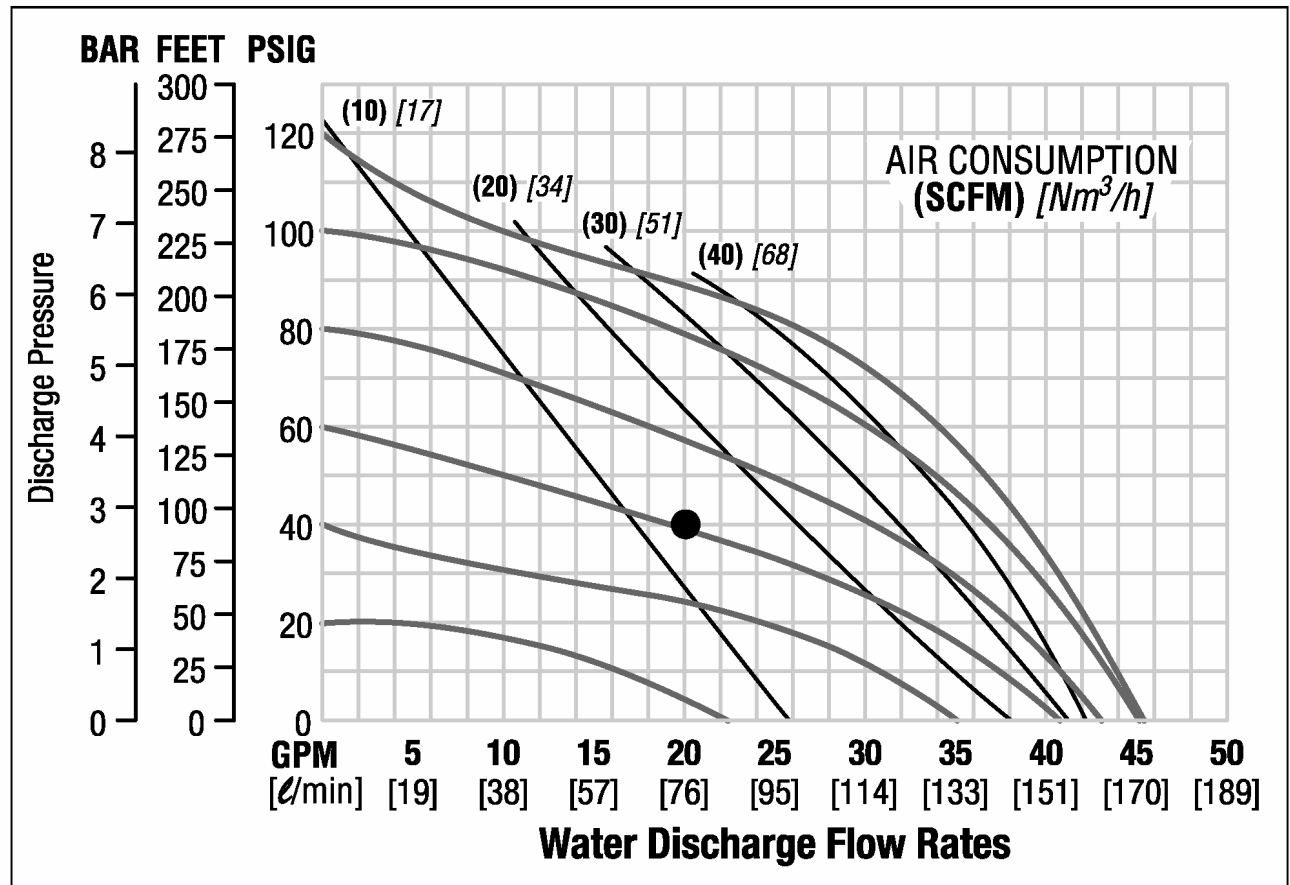
MODEL P2 METAL RUBBER-FITTED

Height27.94 cm (11")
 Width.....26.75 cm (10¹⁷/₃₂")
 Depth.....20.08 cm (7²⁹/₃₂")
 Ship Weight12 kg (Aluminum 26 lbs.)
 16.6 kg (Stainless Steel 36 lbs.)
 16 kg (Hastelloy 40 lbs.)
 Air Inlet6.35 mm (1/4")
 Inlet.....2.54 cm (1")
 Outlet.....1.91 cm (3/4")
 Suction Lift5.79 m (19' Dry)
 8.53 m (28' Wet)

Displacement per
 Stroke34 l (0.091 gal.)¹
 Max. Flow Rate.....170.34 lpm (45 gpm)
 Max. Size Solids.....3.18 mm (1/8")
¹Displacement per stroke was calculated at 4.8 Bar (70 psig) air inlet pressure against a 2 Bar (30 psig) head pressure.

Example: To pump 75.71 lpm (20 gpm) against a discharge pressure head of 2.7 Bar (40 psig) requires 4.1 Bar (60 psig) and 21.97 Nm³/h (13 scfm) air consumption. (See dot on chart.)

Caution: Do not exceed 8.6 Bar (125 psig) air supply pressure.



Flow rates indicated on chart were determined by pumping water.

For optimum life and performance, pumps should be specified so that daily operation parameters will fall in the center of the pump performance curve.

TECHNIQUES DES FLUIDES

10 Rue Jean Poulmarch, bat. 3
 Z.I. Du Val d'Argent
 95100 Argenteuil
 Tel. : 01.34.11.13.73 / Fax : 01.34.11.96.35

E-mail : tdf@techniquesfluides.fr
 Site web : www.techniquesfluides.fr



MODEL P2 METAL TPE-FITTED

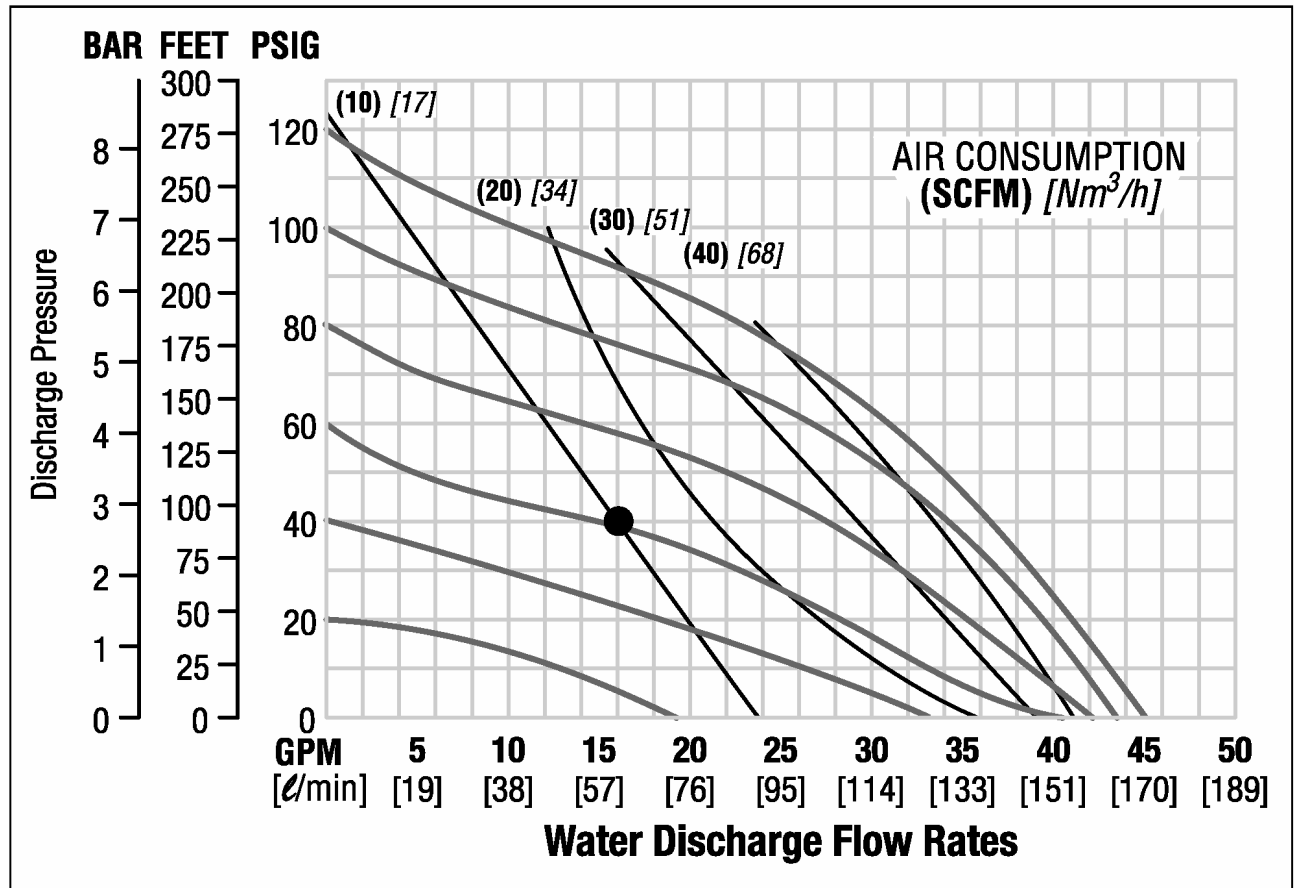
Height27.94 cm (11")
 Width.....26.75 cm (10¹⁷/₃₂")
 Depth.....20.08 cm (7²⁹/₃₂")
 Ship Weight12 kg (Aluminum 26 lbs.)
 16.6 kg (Stainless Steel 36 lbs.)
 16 kg (Hastelloy 40 lbs.)
 Air Inlet6.35 mm (¼")
 Inlet.....2.54 cm (1")
 Outlet.....1.91 cm (¾")
 Suction Lift5.48 m (18' Dry)
 8.53 m (28' Wet)

Displacement per
 Stroke34 l (0.091 gal.)¹
 Max. Flow Rate.....170.34 lpm (45 gpm)
 Max. Size Solids.....3.18 mm (1/8")

¹Displacement per stroke was calculated at 4.8 Bar (70 psig) air inlet pressure against a 2 Bar (30 psig) head pressure.

Example: To pump 60.6 lpm (16 gpm) against a discharge pressure head of 2.7 Bar (40 psig) requires 4 Bar (60 psig) and 17 Nm³/h (10 scfm) air consumption. (See dot on chart.)

Caution: Do not exceed 8.6 Bar (125 psig) air supply pressure.



Flow rates indicated on chart were determined by pumping water.

For optimum life and performance, pumps should be specified so that daily operation parameters will fall in the center of the pump performance curve.

TECHNIQUES DES FLUIDES

10 Rue Jean Poulmarch, bat. 3
 Z.I. Du Val d'Argent
 95100 Argenteuil
 Tel. : 01.34.11.13.73 / Fax : 01.34.11.96.35

E-mail : tdf@techniquesfluides.fr
 Site web : www.techniquesfluides.fr



MODEL P2 METAL TEFLON®-FITTED

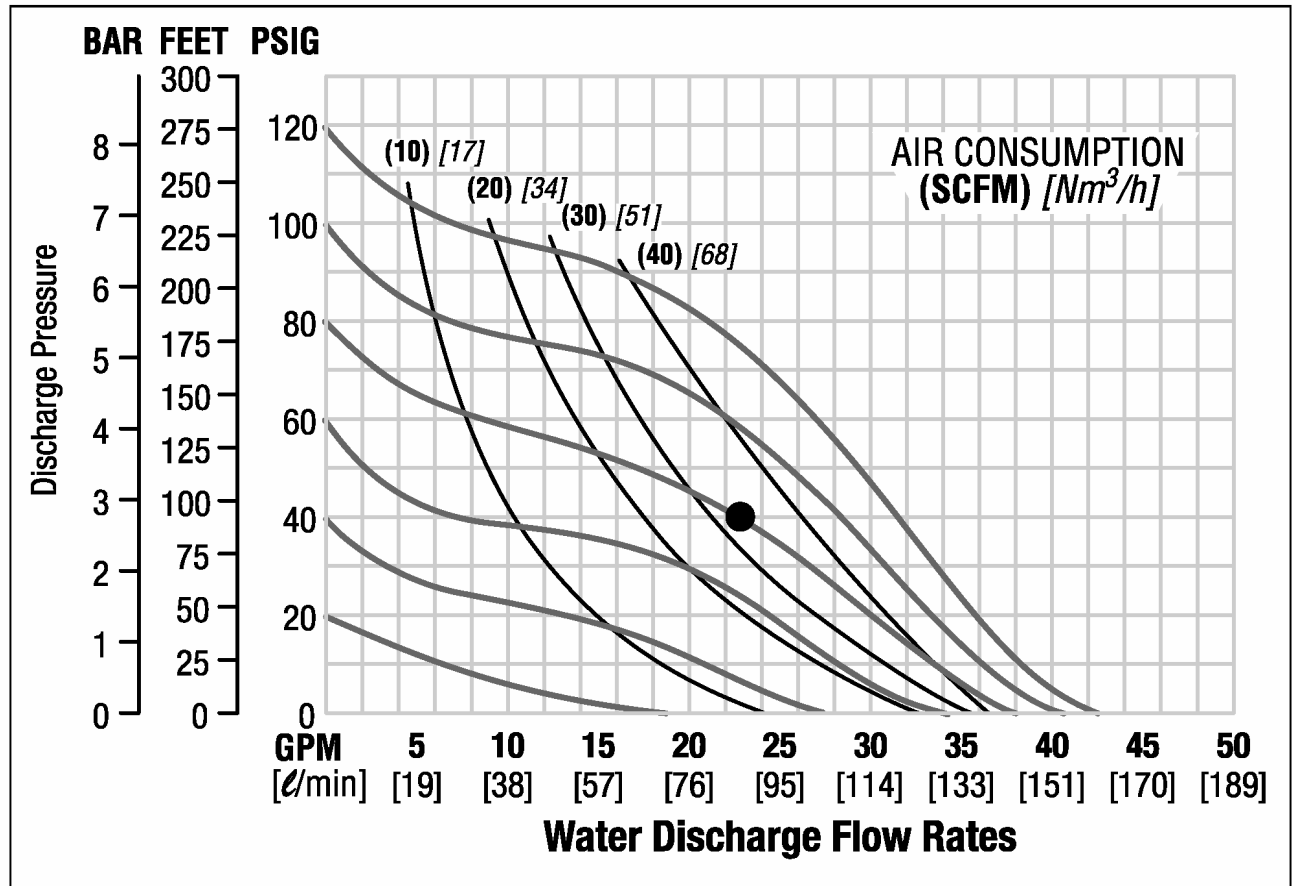
Height27.94 cm (11")
 Width.....26.75 cm (10¹⁷/₃₂")
 Depth.....20.08 cm (7²⁹/₃₂")
 Ship Weight12 kg (Aluminum 26 lbs.)
 16.6 kg (Stainless Steel 36 lbs.)
 16 kg (Hastelloy 40 lbs.)
 Air Inlet6.35 mm (¼")
 Inlet.....2.54 cm (1")
 Outlet.....1.91 cm (¾")
 Suction Lift3.04 m (10' Dry)
 8.53 m (28' Wet)

Displacement per
 Stroke23 l (0.061 gal.)¹
 Max. Flow Rate.....162.77 lpm (43 gpm)
 Max. Size Solids.....3.18 mm (1/8")

¹Displacement per stroke was calculated at 4.8 Bar (70 psig) air inlet pressure against a 2 Bar (30 psig) head pressure.

Example: To pump 87.06 lpm (23 gpm) against a discharge pressure head of 2.7 Bar (40 psig) requires 5.5 Bar (80 psig) and 55.8 Nm³/h (33 scfm) air consumption. (See dot on chart.)

Caution: Do not exceed 8.6 Bar (125 psig) air supply pressure.



Flow rates indicated on chart were determined by pumping water.

For optimum life and performance, pumps should be specified so that daily operation parameters will fall in the center of the pump performance curve.