

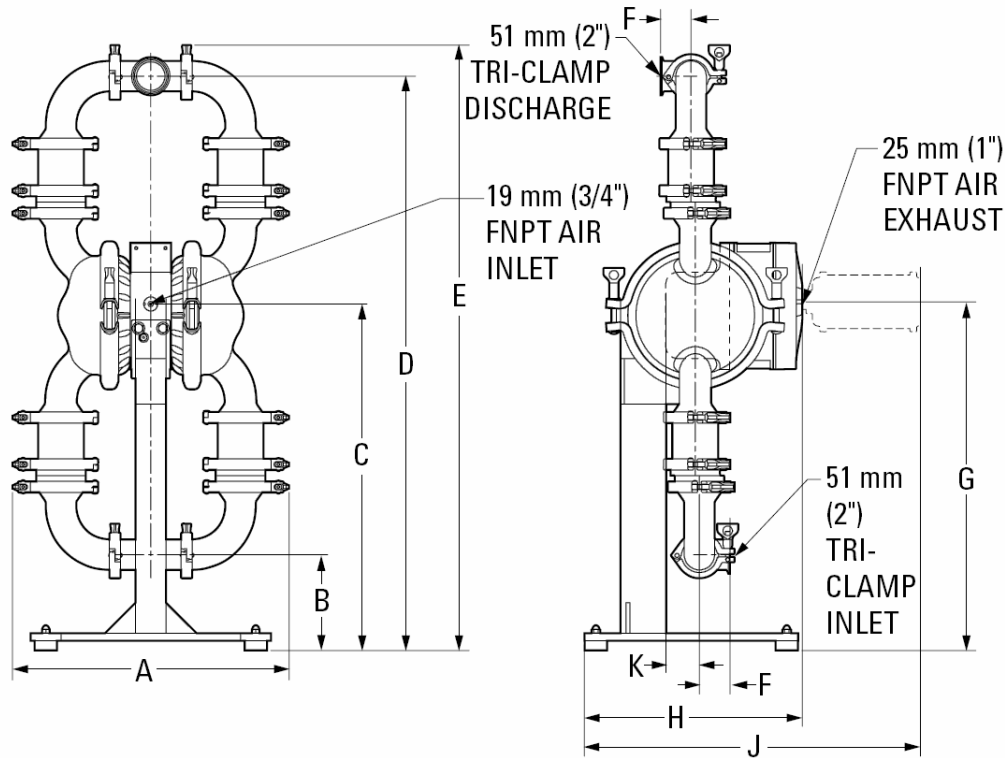
TECHNIQUES DES FLUIDES

10 Rue Jean Poulmarch, bat. 3
 Z.I. Du Val d'Argent
 95100 Argenteuil
 Tel. : 01.34.11.13.73 / Fax : 01.34.11.96.35

E-mail : tdf@techniquesfluides.fr
 Site web : www.techniquesfluides.fr

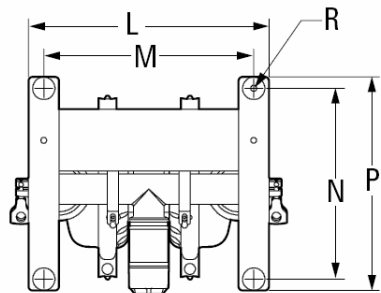


PV8 Saniflo™ HS Fixed



DIMENSIONS

PV8 SANIFLO™ HS VERTICAL FIXED WITH FLAP VALVE		
ITEM	METRIC (mm)	STANDARD (inch)
A	460	18.1
B	160	6.3
C	577	22.7
D	955	37.6
E	1008	39.7
F	51	2.0
G	579	22.8
H	363	14.3
J	559	22.0
K	56	2.2
L	401	15.8
M	351	13.8
N	318	12.5
P	356	14.0
R	ø10	ø0.4



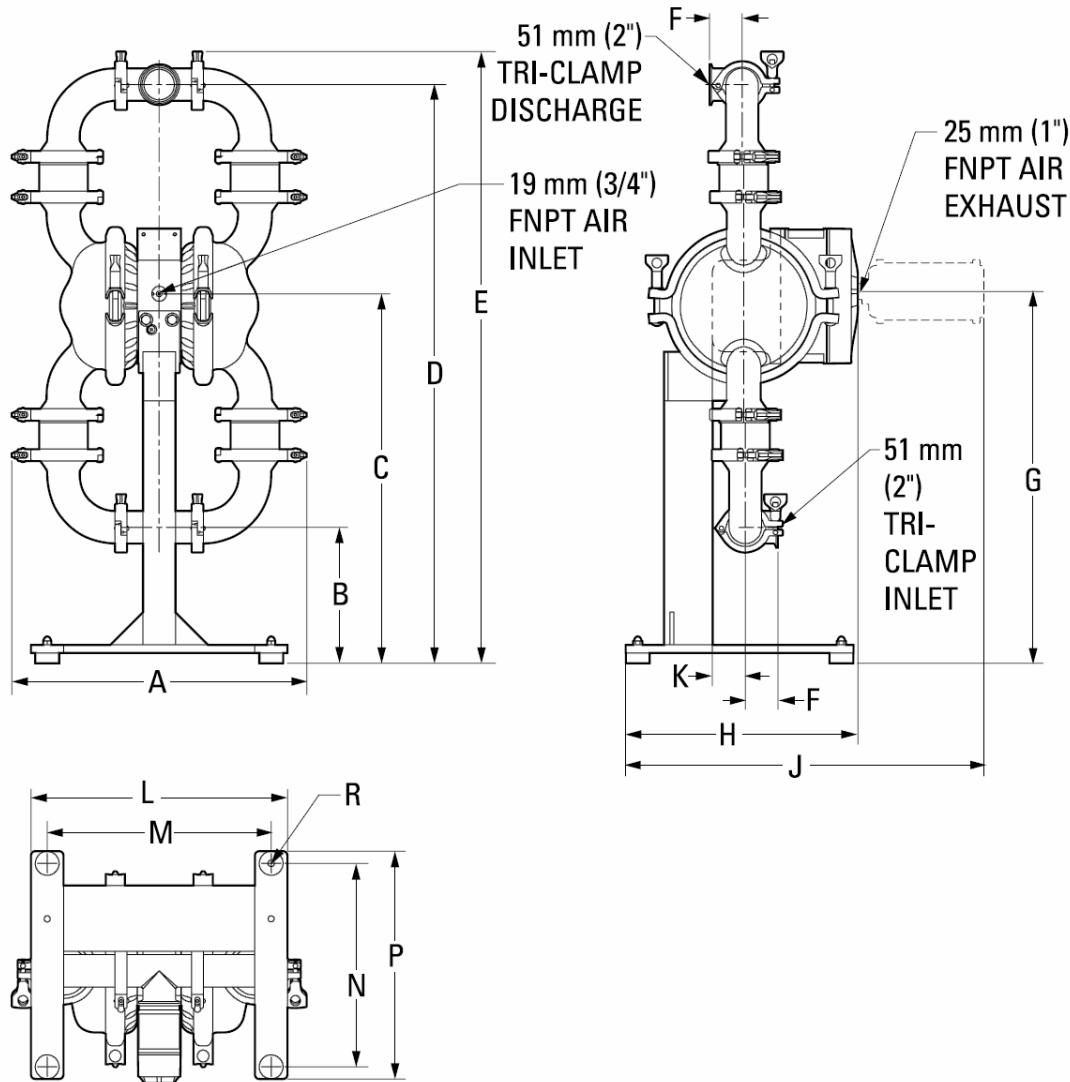
TECHNIQUES DES FLUIDES

10 Rue Jean Poulmarch, bat. 3
Z.I. Du Val d'Argent
95100 Argenteuil
Tel. : 01.34.11.13.73 / Fax : 01.34.11.96.35

E-mail : tdf@techniquesfluides.fr
Site web : www.techniquesfluides.fr



PV8 Saniflo™ HS Fixed



DIMENSIONS

PV8 SANIFLO™ HS VERTICAL FIXED WITH MUSHROOM OR BALL VALVE		
ITEM	METRIC (mm)	STANDARD (inch)
A	460	18.1
B	213	8.4
C	577	22.7
D	902	35.5
E	955	37.6
F	51	2.0
G	579	22.8
H	363	14.3
J	559	22.0
K	46	1.8
L	401	15.8
M	351	13.8
N	318	12.5
P	356	14.0
R	ø10	ø0.4

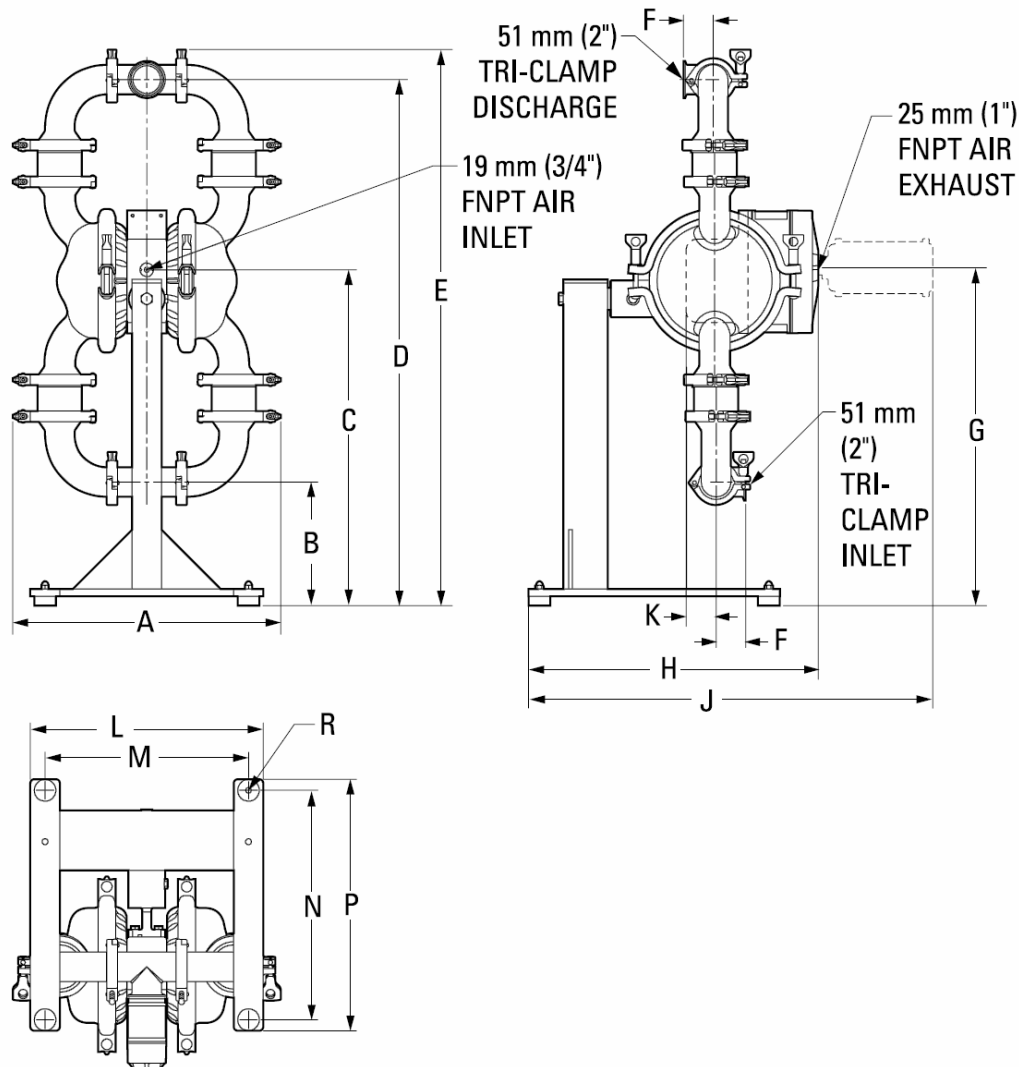
TECHNIQUES DES FLUIDES

10 Rue Jean Poulmarch, bat. 3
 Z.I. Du Val d'Argent
 95100 Argenteuil
 Tel. : 01.34.11.13.73 / Fax : 01.34.11.96.35

E-mail : tdf@techniquesfluides.fr
 Site web : www.techniquesfluides.fr



PV8 Saniflo™ HS Swivel



DIMENSIONS

PV8 SANIFLO™ HS VERTICAL SWIVEL WITH MUSHROOM OR BALL VALVE		
ITEM	METRIC (mm)	STANDARD (inch)
A	460	18.1
B	213	8.4
C	577	22.7
D	902	35.2
E	955	37.6
F	51	2.0
G	579	22.8
H	498	19.6
J	693	27.3
K	46	1.8
L	401	15.8
M	351	13.8
N	394	15.5
P	432	17.0
R	ø10	ø0.4

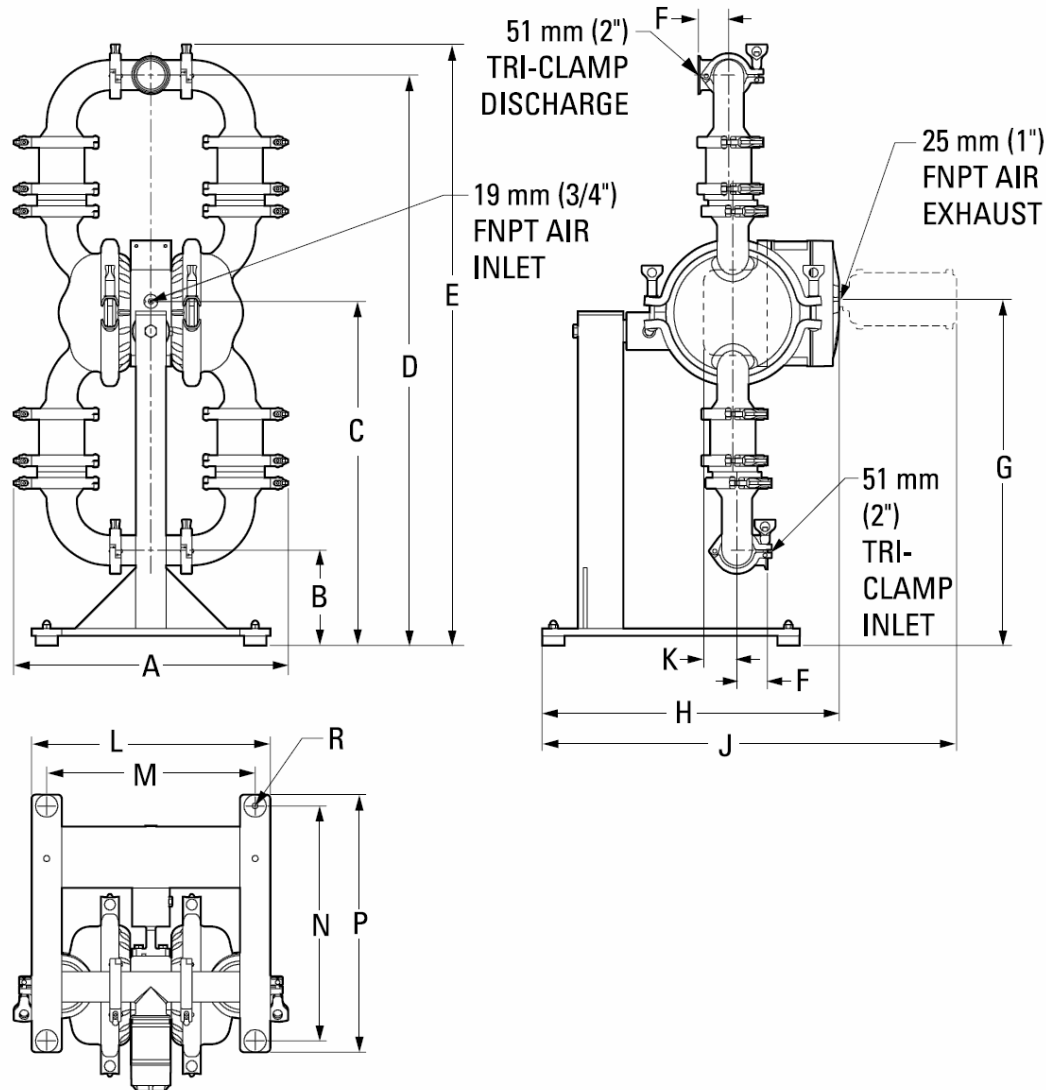
TECHNIQUES DES FLUIDES

10 Rue Jean Poulmarch, bat. 3
 Z.I. Du Val d'Argent
 95100 Argenteuil
 Tel. : 01.34.11.13.73 / Fax : 01.34.11.96.35

E-mail : tdf@techniquesfluides.fr
 Site web : www.techniquesfluides.fr



PV8 Saniflo™ HS Swivel



DIMENSIONS

PV8 SANIFLO™ HS VERTICAL SWIVEL WITH FLAP VALVE		
ITEM	METRIC (mm)	STANDARD (inch)
A	460	18.1
B	160	6.3
C	577	22.7
D	955	37.6
E	1008	39.7
F	51	2.0
G	579	22.8
H	498	19.6
J	693	27.3
K	56	2.2
L	401	15.8
M	351	13.8
N	394	15.5
P	432	17.0
R	∅10	∅0.4

TECHNIQUES DES FLUIDES

10 Rue Jean Poulmarch, bat. 3
 Z.I. Du Val d'Argent
 95100 Argenteuil
 Tel. : 01.34.11.13.73 / Fax : 01.34.11.96.35

E-mail : tdf@techniquesfluides.fr
 Site web : www.techniquesfluides.fr



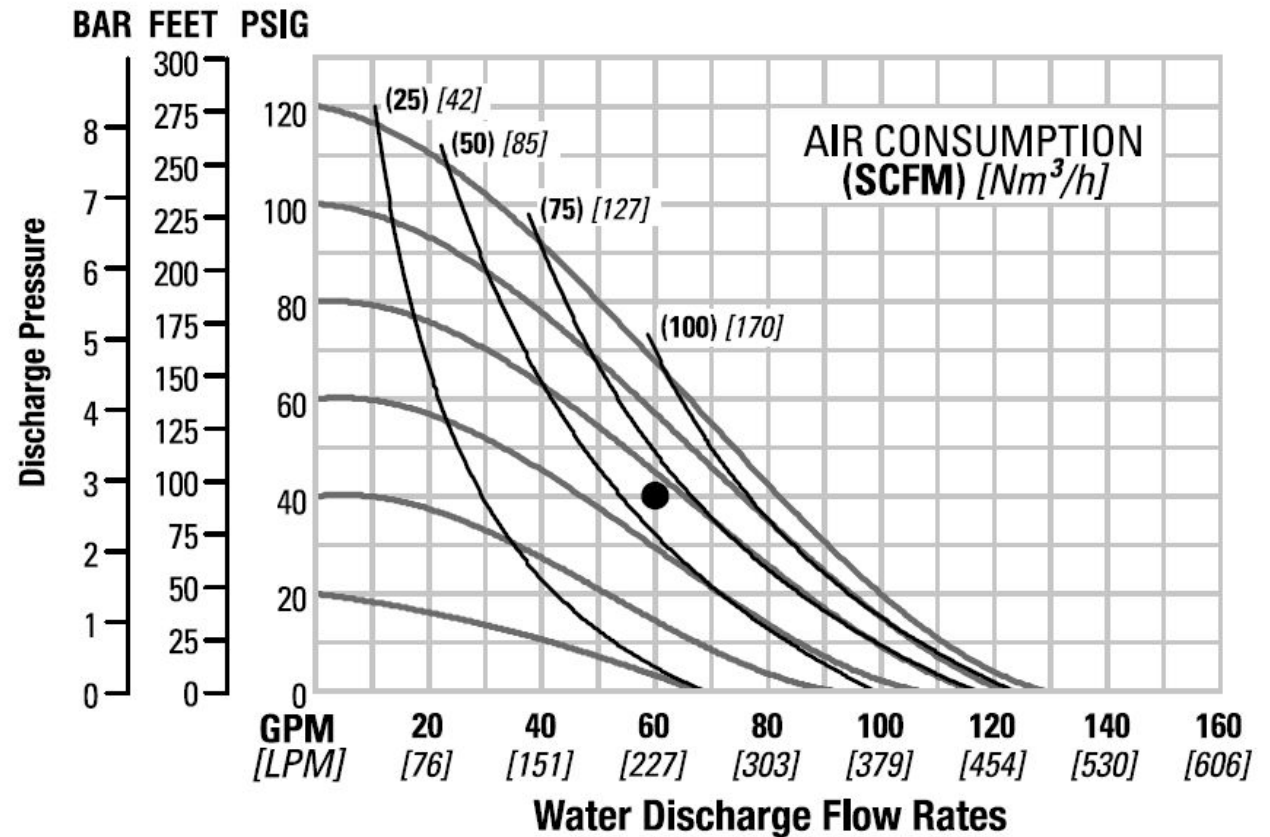
PV8 SANIFLO™ HS ULTRA-FLEX™-FITTED

Height	1008 mm (39.7")
Width	460 mm (18.1")
Depth	398 mm (19.6")
Est. Ship Weight.....	49 (109 lbs.)
Air Inlet	19 mm (3/4")
Inlet	51 mm (2.0")
Outlet	51 mm (2.0")
Suction Lift	2.1 m Dry (6.8')
	9.2 m Wet (30.1')
Displacement/Stroke	0.83 L (0.22 gal.)
Max. Flow Rate	488.7 lpm (129.1 gpm)
Max. Size Solids.....	
Mushroom Valve.....	6.4 mm (1/4")
Ball Valve	6.4 mm (1/4")

¹Displacement per stroke was calculated at 4.8 bar (70 psig) air inlet pressure against a 2 bar (30 psig) head pressure.

Example: To pump 227.1 lpm (60 gpm) against a discharge pressure head of 2.8 bar (40 psig) requires 4.3 bar (63 psig) and 105.3 Nm³/h (62 scfm) air consumption.

Caution: Do not exceed 8.6 bar (125 psig) air supply pressure.



Flow rates indicated on chart were determined by pumping water with a vertically mounted, center ported ball check configuration. When alternate check valve options are used, multiply flow rate by appropriate factor. For optimum life and performance, pumps should be specified so that daily operation parameters will fall in the center of the pump curve.

