

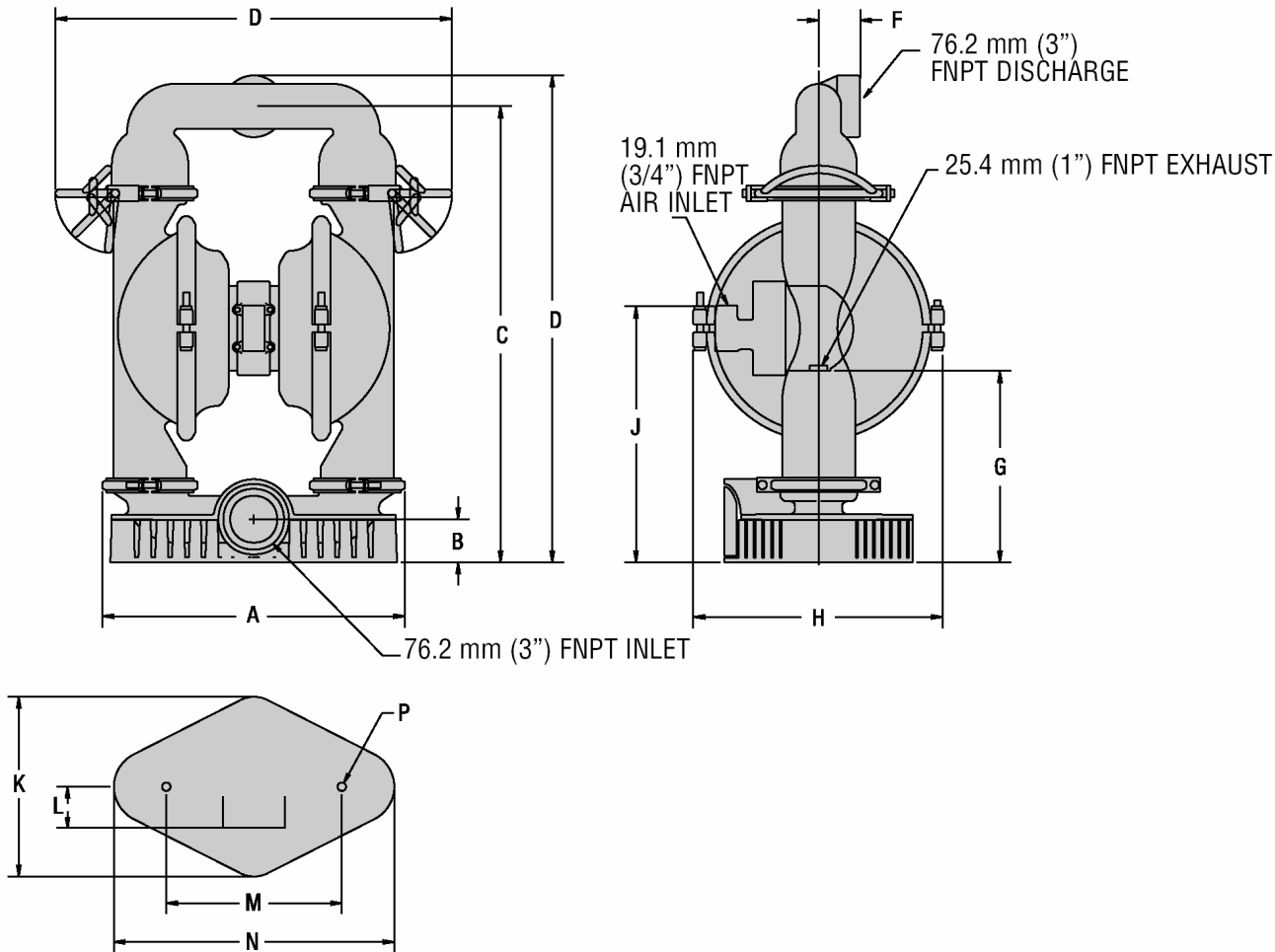
TECHNIQUES DES FLUIDES

10 Rue Jean Poulmarch, bat. 3
 Z.I. Du Val d'Argent
 95100 Argenteuil
 Tel. : 01.34.11.13.73 / Fax : 01.34.11.96.35

E-mail : tdf@techniquesfluides.fr
 Site web : www.techniquesfluides.fr



WILDEN MODEL T15 METAL STALLION



DIMENSIONS - T15 STALLION		
ITEM	METRIC (mm)	STANDARD (inch)
A	505.2	19.90
B	72.2	2.84
C	773.9	30.46
D	835.0	32.87
E	736.6	29
F	68.3	2.68
G	325.4	12.81
H	425.5	16.75
J	431.8	17
K	308.8	12.15
L	42.9	1.68
M	304.8	12
N	479.4	18.87
P	Ø15.9	Ø.62

TECHNIQUES DES FLUIDES

10 Rue Jean Poulmarch, bat. 3

Z.I. Du Val d'Argent

95100 Argenteuil

Tel. : 01.34.11.13.73 / Fax : 01.34.11.96.35

E-mail : tdf@techniquesfluides.fr

Site web : www.techniquesfluides.fr



MODEL T15 METAL STALLION ULTRA-FLEX™-FITTED

Height.....810.6 cm (31¹⁵/₁₆"
Width431.8 cm (17"
Depth278.4 cm (10³¹/₃₂"
Ship Weight.....Aluminum 56.8 kg (125 lbs.)
Air Inlet19.1 mm (¾"
Inlet.....7.62 cm (3"
Outlet7.62 cm (3"
Suction Lift3.49 m' Dry (13)
7.62 m Wet (25')

Displacement per

Stroke 2.5 l (0.66 gal.)¹

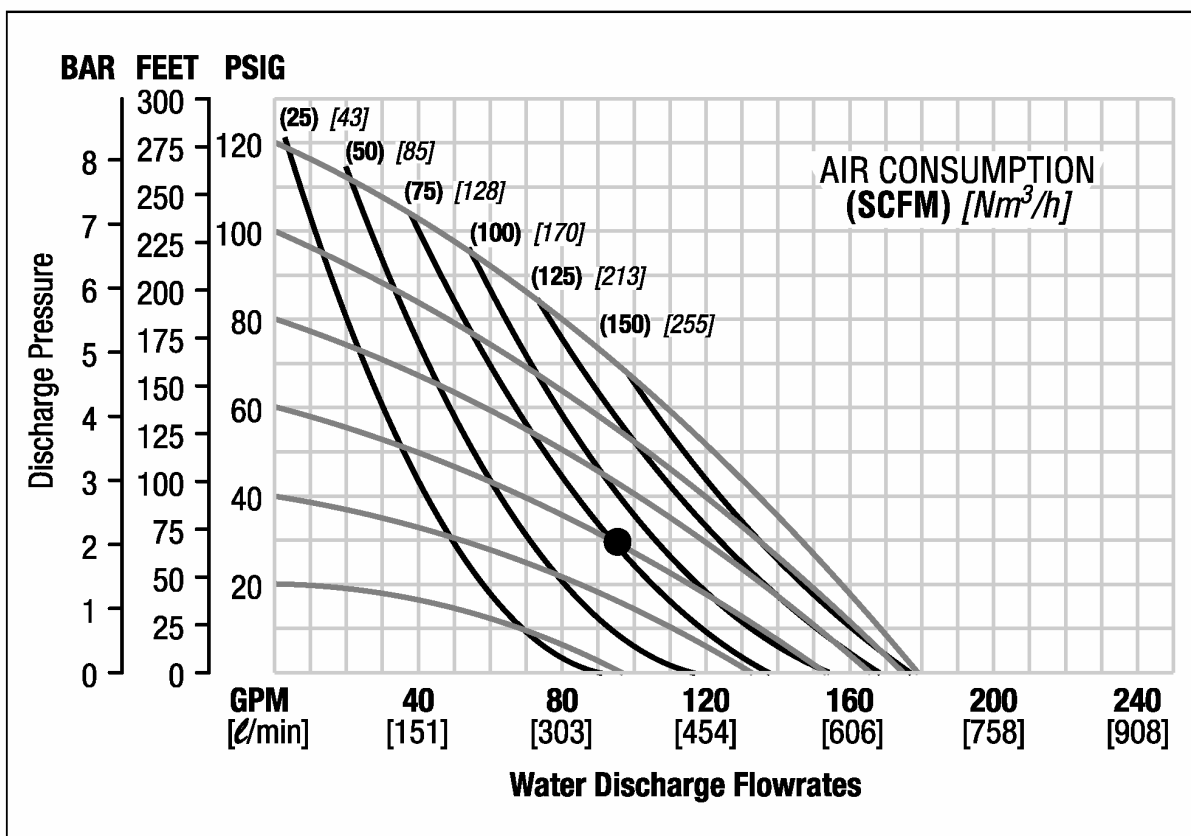
Max. Flow Rate.....692.7 lpm (183 gpm)

Max. Size Solids2.54 cm (1")

¹Displacement per stroke was calculated at 4.8 Bar (70 psig) air inlet pressure against a 2 Bar (30 psig) head pressure.

Example: To pump 132 lpm (95 gpm) against a discharge pressure head of 2.1 Bar (30 psig) requires 4.1 Bar (60 psig) and 127 Nm³/h (75 scfm) air consumption. (See dot on chart.)

Caution: Do not exceed 8.6 Bar (125 psig) air supply pressure.



Flow rates indicated on chart were determined by pumping water.

For optimum life and performance, pumps should be specified so that daily operation parameters will fall in the center of the pump performance curve.