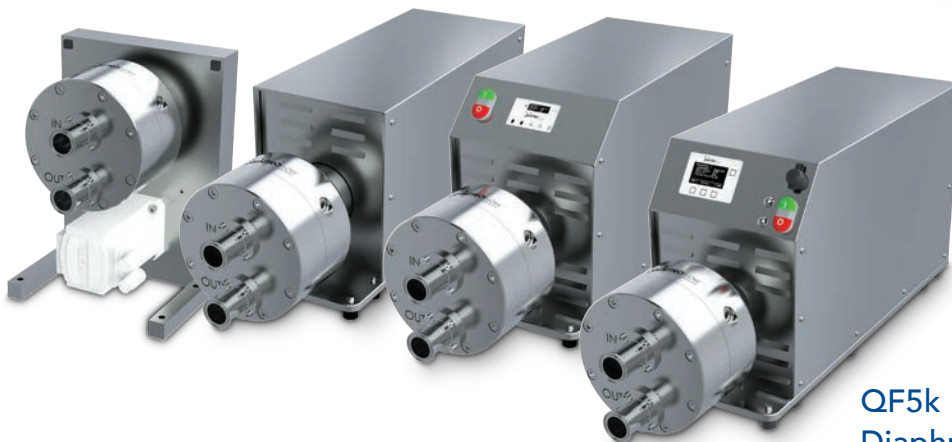
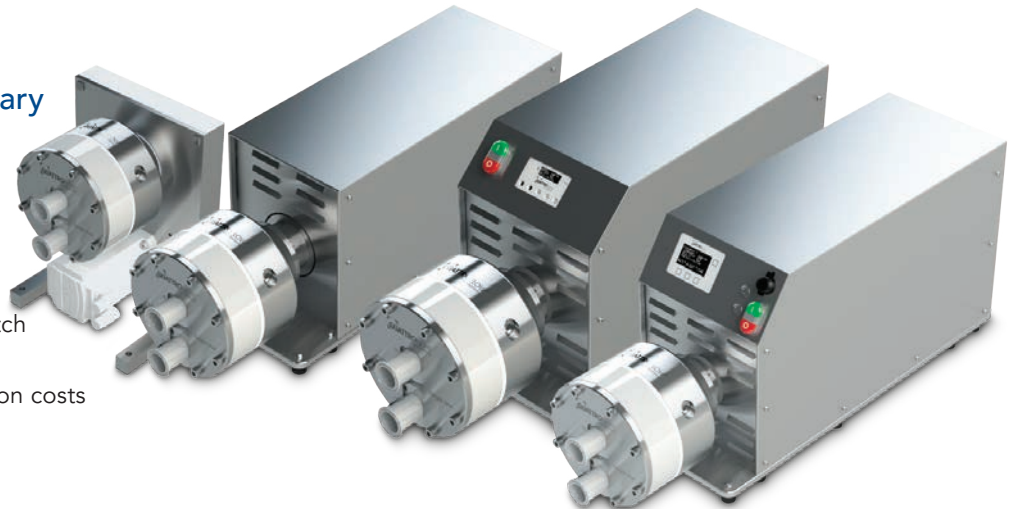


QF5k Features & Benefits

- Increased max. flow rate of 6,000 lph with most drives
- Self-draining design to minimize non-recoverable product
- Enhanced venting to reduce the minimum flow rate required to remove entrapped air during priming
- Patented valve plate design to achieve self-draining and venting
- Up to 120:1 turndown ratio
- Improved linear flow performance
- High flow stability across the entire flow range
- Available in several drive versions:
 - **AC version:** With 3-phase asynchronous motor
 - **Compact drive:** Minimal footprint due to “pump next to motor” design
 - **HT drive:** Plug-and-play version with integrated motor controller and keypad
 - **Q-Control:** Integrated pump controller with direct sensor connection
- Diaphragm monitoring available as an option
- Motor flange design to reduce pump noise and simplify coupling alignment
- Typical applications include chromatography, TFF, virus filtration, sterile filtration and depth filtration

QF5k Single-Use Quaternary Diaphragm Pumps

- Disposable gamma-irradiated pump chamber
- Pump chamber made of solid polypropylene
- Eliminates the risk of cross-batch contamination
- Lowers cleaning and sterilization costs

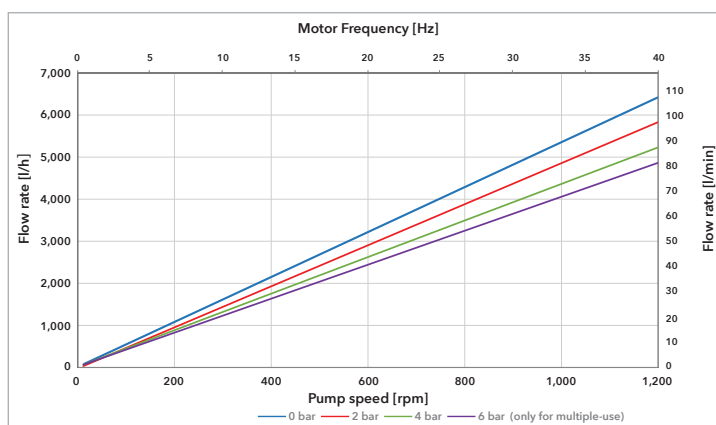


QF5k Multiple-Use Quaternary Diaphragm Pumps

- Clean-in-place/steam-in-place (CIP/SIP) and autoclavability
- Stainless steel pump chamber

Technical Data QF5k

Description			Unit	QF5k-SU	QF5kHT-SU	QF5kQCON-SU	QF5kCD-SU	QF5k-MU	QF5kHT-MU	QF5kQCON-MU	QF5kCD-MU
Flow Rate	Eccentric Shaft 5°	Min.	lph	200	50			200	50		
Flow Rate	Eccentric Shaft 5°	Max.	lph	6,000			5,000	6,000			5,000
Pumping Pressure	Media Temperature <40°C	Max.	bar	4			6				
Pumping Pressure	Media Temperature <40°C	Continuous	bar	4			4				
Pumping Pressure	Media Temperature >40°C	Max.	bar	4			6				
Pumping Pressure	Media Temperature >40°C	Continuous	bar	4			4				
Pumping Pressure	Neg. Inlet Pressure	Continuous	bar	-0,2			-0,2				
Temperature		Min.	°C	4°C (39°F)			4°C (39°F)				
Temperature		Max.	°C	60°C (140°F)			60°C (140°F)				
Pump Speed		Min.	rpm	30	13			30	13		
Pump Speed		Max.	rpm	1,200			1,050	1,200			1,050
Displacement Volume	Eccentric Shaft 5°		ml/rev	91			91				
Connection Specification	Size (inch)		"	1,5" (TriClamp)							
Dimensions	Pump Unit	Length	mm	852	790	893	320	872	851	950	261
Dimensions	Pump Unit	Width	mm	256	275	275	320	257	281	281	320
Dimensions	Pump Unit	Height	mm	333	385	404.5	440	333	385	405	410
Pump Weight with Motor and Housing	Pump Unit		kg	85	100	105	60	95	110	115	70
IP-Protection Class (Total Pump)	Pump Unit		---	55	54	54	55	55	54	54	55
Filling Volume	Without Connection		ml	788							
Surface	Product Wetted		cm ²	1,586			1,586				
Media	Temperature	Max.	°C	60°C (140°F)			90° (194°F)				
Sterilization	Autoclave	Max.	°C	130°C (266°F)			130°C (266°F)				
Sterilization	Gamma Irradiation	Max.	kGy	50			n/a				
Material	Product Wetted	Pump Housing	---	PP			1.4435				
Material	Product Wetted	Valve Plate	---	PP			1.4435				
Material	Product Wetted	Diaphragm	---	TPE			TPE				
Material	Product Wetted	Valves	---	EPDM			EPDM				
Material	Product Wetted	O-rings	---	EPDM			EPDM				



Data from QF5k-HT or QF5k-QCON drive respectively

QTF-10500-C-01-A4

Copyright 2022 PSG®, a Dover company

Authorized PSG® Partner:



Where Innovation Flows



PSG Germany GmbH
 Hochstraße 150-152
 47228 Duisburg, Germany
 Tel: +49 (2065) 89205-0 • Fax: +49 (2065) 89205-40
psgdover.com/quattroflow